

# Effect of Contact Time on The Adsorption Process of Activated Carbon from Banana Peel in Reducing Heavy Metal Cd and Dyes Using a Stirring Tub (Pilot Scale)

*by* Sheilla Marendra

---

**Submission date:** 13-Dec-2024 09:57AM (UTC+0700)

**Submission ID:** 2550859051

**File name:** Wahyuhadi\_2023\_IOP\_Conf.\_Ser.\_Earth\_Environ.\_Sci.\_1203\_012035.pdf (468.35K)

**Word count:** 3503

**Character count:** 17895

PAPER • OPEN ACCESS

## Effect of Contact Time on The Adsorption Process of Activated Carbon from Banana Peel in Reducing Heavy Metal Cd and Dyes Using a Stirring Tub (Pilot Scale)

To cite this article: M E Wahyuhadi *et al* 2023 *IOP Conf. Ser.: Earth Environ. Sci.* **1203** 012035

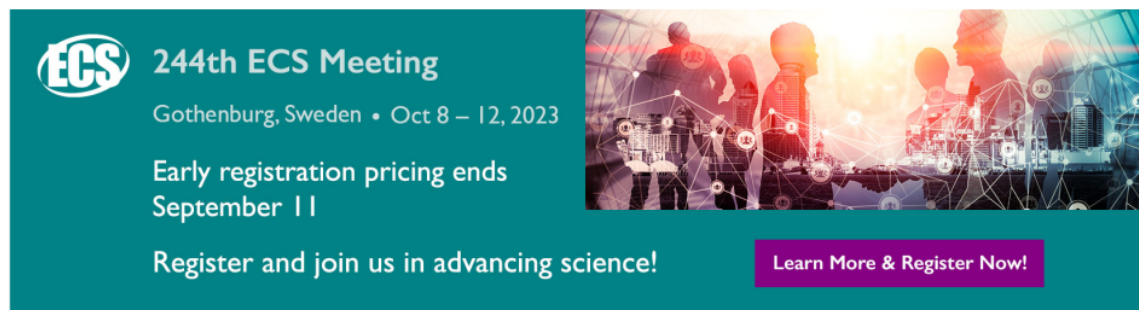
View the [article online](#) for updates and enhancements.

You may also like

- [Banana peel utilization as the green corrosion inhibitor of Iron in NaCl medium](#)  
R Tambun, E Christamore, Y F Pakpahan et al.

- [Electrochemistry of the Arrow Poison, Tubocurarine, Using Boron Doped Diamond Electrode: Experimental and Theoretical Approaches](#)  
S. uri, V. Stankovi, M. Peri et al.

- [Optimization on the synthesis of bacterial nano cellulose \(BNC\) from banana peel waste for water filter membrane applications](#)  
Edwin K Sijabat, Ahmad Nuruddin, Pingkan Aditiawati et al.



**ECS** 244th ECS Meeting  
Gothenburg, Sweden • Oct 8 – 12, 2023

Early registration pricing ends  
September 11

Register and join us in advancing science!

Learn More & Register Now!

The banner features a teal background on the left with the ECS logo and meeting details. On the right, there is a photograph of several people in a meeting room, overlaid with a network of white nodes and lines, symbolizing scientific collaboration and technology.

# Effect of Contact Time on The Adsorption Process of Activated Carbon from Banana Peel in Reducing Heavy Metal Cd and Dyes Using a Stirring Tub (Pilot Scale)

M E Wahyuhadi, R A Kusumadewi\* and R Hadisoebroto

Department of Environmental Engineering, Faculty of Landscape Architecture and Environmental Technology, Universitas Trisakti, Jakarta, Indonesia

rianaayu.kusumadewi@trisakti.ac.id

**Abstract.** One of the most successful processes for extracting, recovering, and recycling metals from wastewater is adsorption utilizing natural activated carbon, such as banana peel waste. This is advantageous for a wastewater treatment sector since natural activated carbon is less expensive than conventional activated carbon. The aim of this research is to determine the optimum contact time at removing heavy metals and colour using a stirrer tub (pilot scale). Physically, banana peels would be burned at a high temperature of 300°C, and chemically, they would be activated with a 20% sulfuric acid (H<sub>2</sub>SO<sub>4</sub>) solution. A mixing tank with a volume of 30 L and a stirring machine spinning at 200 rpm was employed as a contact point between wastewater and activated carbon. Time variations of 15, 30, 60, 75, and 90 minutes were explored to find the best contact time. The ideal circumstances for 75 minutes obtained a Cd metal removal effectiveness of 98.63% with an adsorption capacity of 0.38 mg/g, according to the findings. At the optimum time of 90 minutes, the kepok banana peel was 97.38% successful in absorbing the color using a stirrer.

## 1. Introduction

Wastewater is one of the substances that can pollute the environment, one of the factors for increasing pollution is the increasing population and industrial growth to meet human needs. Screen printing wastewater is one of the wastes that can contaminate water, including synthetic dyes and metal ions [1]. Heavy metal waste such as cadmium Cd is used as a catalyst in the process of making dyes in the textile industry which can pollute the environment. Heavy metals if consumed by humans can cause mucosal irritation, damage to the liver and kidneys, and damage to capillaries. In the environment high levels of heavy metals have also damaged marine life [2].

Krendang Village is one place in West Jakarta that manufactures screen printing. Heavy metal-containing synthetic dyes are used in screen printing processes. Environmental pollution may occur from screen printing industry activities that have not been controlled. One of the efficient methods for extracting, recovering, and reusing metals from wastewater is the adsorption method utilizing activated carbon [3].

One of the most widely utilized adsorbents in the adsorption process to remove metals is activated carbon, which has a specific surface area and a strong affinity for metals. However, additional adsorbents with comparable features have been created a new adsorbent with comparable characteristics



Content from this work may be used under the terms of the [Creative Commons Attribution 3.0 licence](https://creativecommons.org/licenses/by/3.0/). Any further distribution of this work must maintain attribution to the author(s) and the title of the work, journal citation and DOI.

Published under licence by IOP Publishing Ltd

due to the high cost of preparation. There is therefore room to develop a substitute adsorbent that is both affordable and effective. To remove heavy metals, many researchers have looked into the genesis of low-cost adsorbents from agricultural wastes. Agricultural wastes, including banana peels, have been used in this aspect as bioadsorbents for copper adsorption. Banana peels are an affordable source of biomaterials that are also environmentally beneficial. Indonesia is the largest producer in Asia. Banana plants (*Musa paradisiaca*) thrive and spread throughout Indonesia. growth is increasing from year to year [4] (Suhartini, 2012). Banana waste in Indonesia reached 8.27 kg per population per year in 1999, according to the Directorate General of Horticulture, and increased to 4,384,384 tons in 2002. The potential for the availability of bananas is quite abundant which also contributes to banana peel waste. Activated carbon can be produced naturally from kepok banana peels from the banana processing industry [5].

The use of kepok banana peels as activated carbon in the reduction of heavy metals in the domestic screen printing business was studied by Delearoza R. [6]. From this research, the effectiveness of heavy metal absorption is 98.13% and in dye absorption is 99.99%. The research was conducted on a laboratory scale. According to Siringgo [7], activated kepok banana peels can remove Cd metal by 88.8% efficiency. In Kusumadewi's study [8], it was demonstrated that banana peel waste could be used as a biosorbent for heavy metal with a very high efficiency (more than 98%) in a small amount (5-15 grams), in a relatively short amount of time (30-60 minutes), and the effluent quality meet the requirement of allowance quality standard, justifying the use of an adsorbent for financial reasons.

The use of banana peel waste as an adsorbent in extracting metals from the wastewater from the screen printing industry on a pilot scale will be performed in this study as a continuation of Delarozza's research [6] utilizing a stirrer. The effectiveness of using banana peels to remove heavy metals on a pilot scale or under real-world circumstances in the screen printing industry needs to be studied.

## 2. Methodology

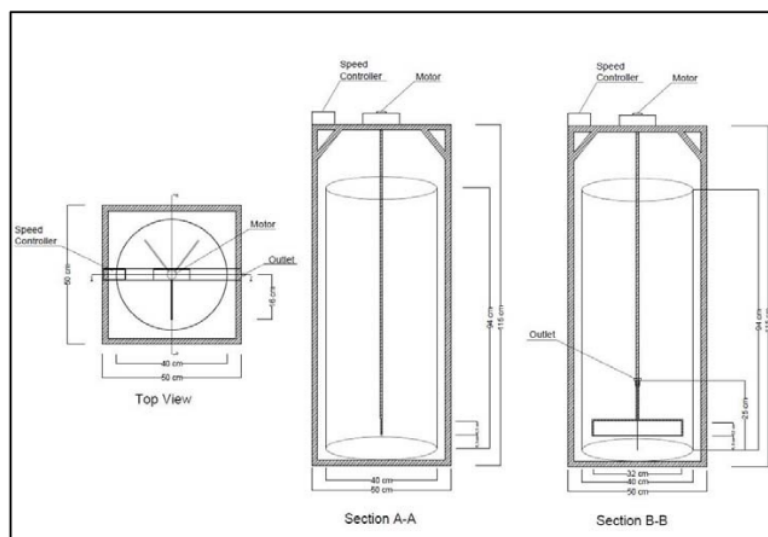
The stages of labor in this study were divided into three main categories: preparation, adsorption, adsorption kinetics calculation, and reaction order.

### 2.1 Preparation of Making Adsorbent from Banana Peel

The first step in the preparation process is to make an adsorbent from banana peels. Banana peels can be purchased from fried banana sellers and markets. After being cleaned with distilled water, the banana peel was rinsed under running water. To get rid of dirt, banana peels should be washed in clean water. To reduce the amount of water adhering to the banana peel, the banana peel is washed, cut into small pieces, and dried in the sun for five days. The banana peels were dried for 5 days before being fired for 30 minutes at 300 degrees Celsius to make charcoal. The banana peels were roughly chopped and sieved through a sieve with a mesh size of 100. A desiccator is used to store crushed charcoal. H<sub>2</sub>SO<sub>4</sub> solution with a concentration of 20% was used to activate the carbonized banana peel adsorbent. The proportion of active adsorbate and adsorbent is 2 milliliters/gram. This comparison is based on previous research by Miranti [9], which found that the use of activated charcoal in a 2:1 ratio in the activation process resulted in a substantial increase in surface area. The adsorbent is activated by soaking banana peels in H<sub>2</sub>SO<sub>4</sub> solution for 24 hours. After being cleaned with distilled water, the activated carbon was dried for two hours at 110°C in the oven.

### 2.2 Preparation of Manufacture of stirred tank reactor for Adsorbent stirred tank reactor

The stirred tank reactor is made of a finished drum which is attached to the top of the stirring rod and the stirrer machine is installed which can be adjusted in speed. The manufacture of the stirred tank reactor begins with planning the design of the equipment such as the height of the tub, the diameter of the tub, and the width and height of the paddle. The tool is made using a plastic-based barrel with a height of 94 cm and a diameter of 40 cm. According to Reynold & Richard [10] the dimensions of the paddle are 50-80% of the width of the tub, while the width is 1/6 - 1/10 of the diameter of the paddle. By referring to the design criteria, a paddle dimension design was made with a height of 5.3 cm and a width of 28 cm. From the tub, it is planned that an outlet with a height of 25 cm for water discharge after processing is installed with a valve that can be opened and closed. Design drawings can be seen in Figure 1.



**Figure 1.** Stirred reactor design drawing

### 2.3 Characteristics of Screened Wastewater.

Water sample preparation is the first step in the water characteristics stage. The screen printing wastewater sample was accommodated in a 50 mL Erlenmeyer then transferred to a 250 mL Erlenmeyer. Then 5 mL of concentrated HNO<sub>3</sub> was added, and everything was mixed together. Boil the sample with a heater until it is reduced to about 10-15 mL. At a wavelength of 228.8 nm, heavy metal content of Cd was also examined using an Atomic Adsorption Spectrophotometer. Table 1 contains the findings from the examination of the metal concentration in wastewater from screen printing.

**Table 1.** Screen Printing Wastewater Characterization

Heavy Metal	Concentration mg/L
(Zn)	0.8000
(Cu)	0.3203
(Cr)	0.0117
(Cd)	1.5430
(Ni)	0.5148
(Pb)	0.0053

### 2.4 Langmuir Isotherm.

Langmuir isotherm occurs because the adsorbent has a homogeneous surface so that the energy produced can bind heavy metals constant in all directions [11].

The mathematical equation for the Langmuir isotherm is:

$$\frac{1}{x/m} = \frac{1}{b} + \frac{1}{abc} \quad (1)$$

Information:

$x/m$  = amount of adsorbate adsorbed per unit weight of adsorbent (mg/g)

$a$  = constant that rises as size grows

$b$  = amount absorbed to form intact layer (mg/g)

$c$  = the concentration of the substance in solution following adsorption (mg/L).

### 2.5 Freundlich Isotherm.

According to the Freundlich equation, adsorption takes place in several layers on the surface of the adsorbent and becomes faster as concentration rises [12]. According to Tchobanoglous [13], the derivation of the formula for the Freundlich isotherm is as follows:

$$\log \frac{x}{m} = \log K_f + \frac{1}{n} \log C_e^2 \quad (2)$$

Information:

$x/m$  = amount of adsorbate that is absorbed per gram of adsorbent

$C_e$  = Adsorbate solution equilibrium concentration following adsorption (mg/L)

$K_f$  = empirical constant

### 2.6 Adsorption kinetics

A linear regression approach to the equations of zero order, first order, second order, and third order can be used to determine the adsorption kinetics [14]. A reaction that only depends on one ingredient or is proportionate to one of the reactants is referred to as a first order reaction. The following is the first order linear equation [15].

$$\ln (q_e - q_t) = \ln q_e - K_1 t \quad (3)$$

Information:

$q_e$  = Number of metal ions adsorbed at equilibrium (mg/g)

$q_t$  = Number of metal ions adsorbed at time  $t$  (mg/g)

$t$  = time (minutes)

$K_1$  = reaction rate constant ( $\text{minute}^{-1}$ )

A second order reaction is a reaction whose speed is directly proportional to the square of the concentration of one of the reactants. The second order linear equation is as follows:

$$\frac{t}{qt} = \frac{1}{K_2 q_e^2} + \frac{t}{qe} \quad (4)$$

Information:

$q_e$  = Number of metal ions adsorbed at equilibrium (mg/g)

$q_t$  = Number of metal ions adsorbed at time  $t$  (mg/g)

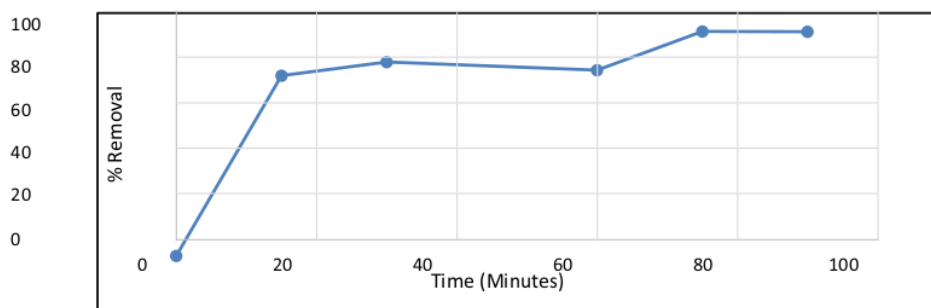
$t$  = time (minutes)

$K_2$  = Reaction rate constant ( $\text{g} \cdot \text{mg}^{-1} \cdot \text{min}^{-1}$ )

## 3. Result and Discussion

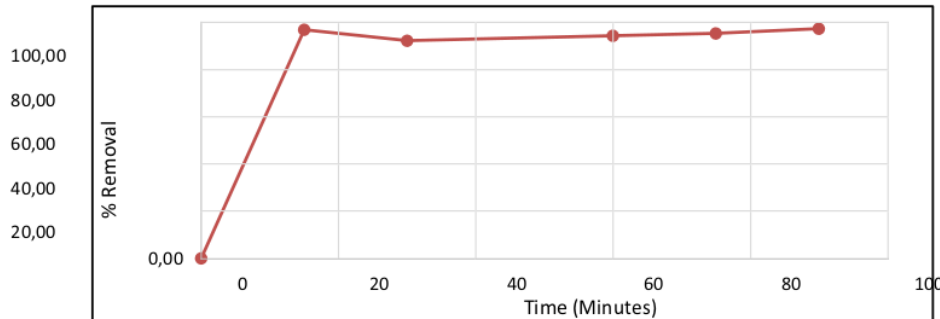
### 3.1 Effect of Contact Time on Removal of Heavy Metal Cd & Dyes Using Banana Peel Adsorbent

Determination of contact time aims to obtain the optimum time to adsorb heavy metals and colors. In this study, 5 time variations were used, namely 15 minutes, 30 minutes, 60 minutes, 75 minutes and 90 minutes, which were taken from previous studies. Relationship of adsorbent contact time to percent removal of heavy metal Cd can be seen in Figure 2.



**Figure 2.** Relationship of Adsorbent Contact Time to Percent Removal of Heavy Metal Cd

The best conditions for metal removal in the pilot scale experiment were 75 minutes, a metal removal percentage of 98.63%, and an adsorption capacity of 380.45 mg/g with a final concentration of 0.0212 mg/g. contact between metal ions and the adsorbent that causes metal ions to adhere to the surface of the adsorbent [16]. The removal efficiency of cadmium metal and adsorption capacity both increase with the amount of time the adsorbent and adsorbate are in contact. The efficiency and adsorption capacity of the adsorbent will, however, decline after it has reached the point at which it should be removed. This is owing to the fact that the desorption process might be triggered by contact times between the adsorbent and adsorbate that are longer than the ideal contact times. If the pilot scale concentration of effluent is directly discharged into water bodies, the quality criteria has been met. The maximum level of cadmium metal (Cd) was 0.08 mg/g, while the initial concentration of Cd metal in the pilot scale investigation was 1.543 mg/g after processing to 0.0212 mg/g. Figure 3 shows the relationship between adsorbent contact time and the percentage of dyes removed.



**Figure 3.** Relationship of Adsorbent Contact Time to Percent Removal of dyes

In the pilot-scale experiment, the ideal contact period was 90 minutes, with a 97.38% efficiency and a 0.092 mg/g adsorption capacity, and a 1.174 PtCo final concentration. The physical shape of the waste after processing by swirling and adding adsorbent from banana peels, which were originally hazy and the color became clearer, can show a decrease in dyestuff.

### 3.2 Adsorption isotherm

Graph of the Langmuir isotherm and the Freundlich isotherm at a speed of 200 rpm on the pilot scale is shown in Figure 4.

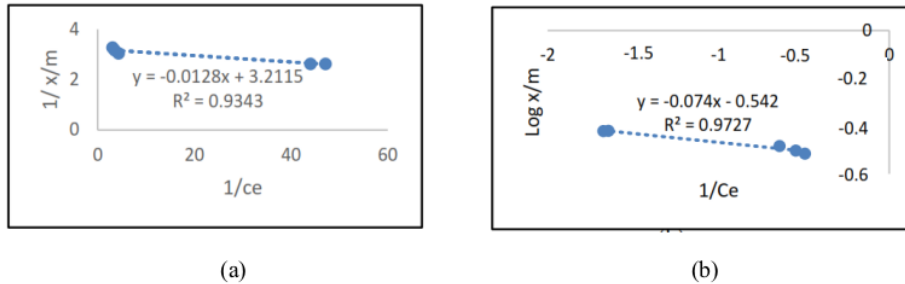


Figure 4. (a) Langmuir Isotherm, (b) Freundlich Isotherm

Figure 4 displays the outcomes of a pilot-scale experiment using the Langmuir isotherm at a stirring speed of 200 rpm, with the equation of the curve  $y = -0.0128 + 3.2115$  and a regression coefficient ( $R^2$ ) of 0.9343. While the Freundlich isotherm's results display the curve's results,  $y = -0.074 - 0.542$  with an  $R^2$  regression coefficient of 0.9727, Freundlich adsorption is a type of physical adsorption in which the adsorbent's surface is the only place where absorption takes place. In addition, the Freundlich isotherm construction uses the equilibrium constant ( $K_f$ ) as a measure of adsorption capability. A multilayer arises in the Freundlich isotherm, with the layer becoming thicker at higher pollutant concentrations. The amount of metal molecules that interact and collide with the adsorbent increases with the concentration of the metal solution, increasing the adsorption capacity [17].

### 3.3 Adsorption kinetics

Figure 5 is a graph of order 1 and order 2 kinetics at a speed of 200 rpm on a pilot scale.

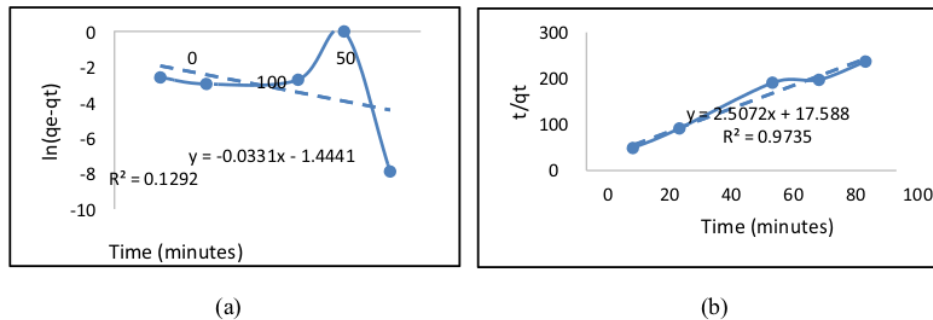


Figure 5. (a) Pseudo 1, (b) Pseudo 2

Figure 5 demonstrates that order 2 is followed by the stirring speed that results in the best contact time of 75 minutes. The highest linear regression value is used to determine the order of each adsorption kinetic, which implies that the higher the linear regression value, the more linear the curve based on each order's linear regression equation will be. easy to accomplish This work demonstrated the second order adsorption kinetics using kepok banana peel as the adsorbent. Conclusion: The sample contains less Cd metal the faster it is operated, the longer the contact duration, and the larger the constant value.

## 4. Conclusion


According to the research, kepok banana peel can effectively absorb the heavy metal Cd using a stirrer at an ideal contact time of 75 minutes, at a rate of 98.63%, with an adsorption capacity of 0.38 mg/g, and can effectively absorb the dye at an ideal contact time of 90 minutes, at a rate of 97.38%. The Freundlich isotherm was followed by the isotherm method selected to remove heavy metal Cd by the



adsorbent of kepok banana peel using a stirrer (pilot scale), with an R2 value of 0.9727, a n value of 12.8 and a kf value of 26.29. The chosen kinetics model has an R2 value of 0.9735 and an absorption rate of 0.398851 g.mg-1.minute-1 while removing heavy metal Cd utilizing a stirrer and kepok banana peel as the adsorbent (pilot scale).

### Reference

- [1] Hevira L, Zein R, Ramadhani P. 2019. Metoda Adsorpsi Pada Penyerapan Ion Logam dan Zat Warna Dalam Limbah Cair. Sains dan Terapan Kimia, Vol. 13, No. 1 (Januari 2019), 39 – 58
- [2] M.A Hossain, W S Guo, T V Nguyen. 2012. Biosorption of Cu(II) From Water by Banana Peel Based Biosorbent: Experiments and Models of Adsorption and Desorption. Journal of Water Sustainability, Volume 2, Issue 1, March 2012, 87–104 © University of Technology Sydney & Xi'an University of Architecture and Technology
- [3] Bhattacharyya, K.G., Gupta, S.S. 2006. Kaolinite, montmorillonite, and their modified derivatives as adsorbents for removal of Cu(II) from aqueous solution. Separation and Purification Technology, 50(3), 388-397.
- [4] Surhatini. 2018. Analisis Daya Saing Ekspor Pisang (Musa Paradiaca L.) Indonesia di Pasar Asean dalam Menghadapi Masyarakat Ekonomi Asean (MEA). DOI: 10.21776/ub.jepa.2018.002.04.2
- [5] Atminingtyas. 2016. Pengaruh Konsentrasi Aktivator Naoh dan Tinggi Kolom pada Arang Aktif dari Kulit Pisang terhadap Efektivitas Penurunan Logam Berat Tembaga (Cu) dan Seng (Zn) Limbah Cair Industri Elektroplating. Jurnal Teknik Lingkungan, Vol 5, No 1 (2016) ejournal-s1.undip.ac.id/index.php/tlingkungan
- [6] Delarozza R. 2019. Pemanfaatan Kulit Pisang Kepok Sebagai Adsorben Karbon Aktif Dalam Penurunan Logam Tembaga (Cu) & Warna Pada Air Limbah Industri Sablon Rumah Tangga. Tugas Akhir
- [7] Siringo-ringo E P. 2019. Pengaruh Waktu Kontak, pH dan Dosis Adsorben dalam Penurunan Kadar Pb dan Cd menggunakan Adsorben Dari Kulit Pisang. Tugas Akhir. TA/TL-USU/2019/126
- [8] Kusumadewi R. 2019. Utilization Of Banana Peel And Water Hyacinth Leaves As Adsorbent For Removal Of Copper From Wastewater, International Journal Of Scientific & Technology Research Volume 8, Issue 12, December 2019
- [9] Miranti, Siti Tias.2012. Pembuatan Karbon Aktif Bambu dengan Metode Aktivasi Terkontrol Menggunakan Activating Agent H3PO4 dan KOH. Departemen Kimia, Fakultas Teknik Universitas Indonesia.
- [10] Reynolds, T.D. & Richards, P.A. 1996. Unit Operations and Processes in Environmental Engineering. 2nd ed.
- [11] Hossain, M. A., H. H. Ngo, W. S. Guo and T. V. Nguyen. 2012. Removal of Copper from Water by Adsorption onto Banana Peel as Bioadsorbent. Int.J. Of Geomate, EOMATE, 2(2) : 227- 234 PWS Publishing Co.
- [12] Jasmal, Sulfikar dan Ramlawati. 2015. Kapasitas Adsorpsi Arang Aktif Ijuk Pohon Aren (Arenga pinnata) terhadap Pb2+. Jurnal Sainsmat, 4(1) : 57-66.
- [13] Tchobanoglous. 2003. Wastewater Engineering Treatment and Reuse, Fourth Edition. McGraw Hill, USA
- [14] Estiaty L. 2013. Keseimbangan dan Kinetika Adsorpsi Ion CU2+ pada Zeloit-H. ISSN 0125-9849 e ISSN 2354 6638 Ris.Geo.Tam Vol. 22, No.2, Juni 2013 (127-141) DOI: 10.14203/risetgeotam2012.v22.63
- [15] Ali, A. an`d Saeed, K. 2014. Decontamination of Cr ( VI ) and Mn ( II ) from aqueous media by untreated and chemically treated banana peel : a comparative study, Desalination and Water Treatment, (December), pp. 1–6.

- [16]  Pratomo, S. W., Mahatmanti, F. W. dan Sulistyaningsih, T. 2017. Pemanfaatan Zeolit Alam Teraktivasi  $H_3PO_4$  Sebagai Adsorben Ion Logam Cd(II) Dalam Larutan. *Indonesian Journal of Chemical Science*. Vol. 6. No. 2 : 161-166.
- [17] Widhianti W. D. 2010. Pembuatan arang aktif dari biji kapuk (*Ceiba pentandra* L.) sebagai adsorben zat warna rhodamin B [skripsi]. Surabaya : Fakultas Sains dan Teknologi, Universitas Airlangga.

# Effect of Contact Time on The Adsorption Process of Activated Carbon from Banana Peel in Reducing Heavy Metal Cd and Dyes Using a Stirring Tub (Pilot Scale)

---

## ORIGINALITY REPORT

---

17%

SIMILARITY INDEX

14%

INTERNET SOURCES

11%

PUBLICATIONS

%

STUDENT PAPERS

---

## MATCH ALL SOURCES (ONLY SELECTED SOURCE PRINTED)

---

1%

★ dev.journal.ugm.ac.id

Internet Source

---

Exclude quotes Off

Exclude matches Off

Exclude bibliography Off