

EKOMBIS REVIEW

JURNAL EKONOMI & BISNIS

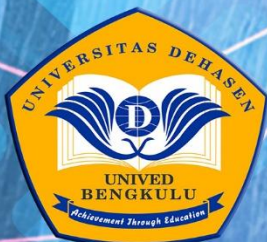
p-ISSN 2338-8412
e-ISSN 2716-4411



Volume 12, Nomor 1, Januari 2024

EKOMBIS REVIEW

JURNAL EKONOMI & BISNIS



UNIVERSITAS DEHASEN BENGKULU

Jl. Meranti Raya No.32. Sawah lebar, Kota Bengkulu

[ABOUT THE JOURNAL](#)[CURRENT](#)[ARCHIVES](#)[ANNOUNCEMENTS](#)[LOGIN](#)[Q SEARCH](#)[SUBMISSIONS](#)[EDITORIAL TEAM](#)[CONTACT](#)[HOME](#) / [Editorial Team](#)

Editor in Chief

[Dr. Karona Cahya Susena](#), (Scopus ID: [57205063552](#) , Sinta ID: [6029303](#)) Department of Management, Universitas Dehasen Bengkulu, Bengkulu, Indonesia

Editorial Board

[Dr. Anurag Hazarika](#), M. Com, MBA, M. Phil, PGDCA, PGDRD, Ph.D, (ORCID ID: 0000-0002-0005-4813), Tezpur Central University, Assam, India.

[Dr. Samikshya Madhukullya](#), (ORCID ID: 0009-0002-1206-1284), Senior Faculty Member and Academic Advisor at Global Interfaith University, USA

ARTICLE TEMPLATE



ACCREDITATION OF JOURNALS



Nadezhda Fedko, (ORCID ID: 0000-0001-9153-1170), Senior Lecturer, Rostov State Transport University, Russia

Dr. Roberto Maurice Robert, (ORCID ID: 0009-0006-6610-5245), President and Chancellor of 21st Century Open University, USA

Prof. Alina Borysova, (ORCID ID: 0000-0003-3323-4463), Kharkiv State Academy of Culture, Ukraine

Prof. Dr. Ginta Ginting, MBA, (Scopus ID: 37088555000 , Sinta ID: 6027958), Universitas Terbuka, Jakarta, Indonesia

Yulita Suryantari, M.M., (Sinta ID: 6804738), Universitas Terbuka, Jakarta, Indonesia

Nihan Anindyaputra Lanisy, S.E., M.Sn., (Sinta ID: 6767550), Universitas Terbuka, Jakarta, Indonesia

Arif Widyatama, (Scopus ID: 57214510720) Sekolah Tinggi Ilmu Ekonomi Panca Bhakti Palu, Indonesia.

Yusnita Octafilia Theresia A Yesu Infante, (Sinta ID: 6021677), Institut Bisnis dan Teknologi Pelita Indonesia, Indonesia

Dr. Hartini, S.E., M.M., (Scopus ID: 57215774313), STKIP Pembangunan Indonesia Makassar, Indonesia.

M. Zidny Nafi' Hasbi, (Sinta ID: 6793858), Universitas Alma Ata, Yogyakarta, Indonesia

Maya Macia Sari, S.E., M.Si., (Sinta ID: 6703506), Universitas Pembangunan Panca Budi Medan, Sumatera Utara, Indonesia

VIDEO SUBMISSIONS

Cara Mengirimkan Arti...



JOURNAL DETAILS

Editorial Board

Peer Reviewers

Author Guidelines

Make Submission

Publication Ethics

Peer Review Policy

Focus And Scope

Plagiarism Policy

Open Access Policy

Yuni Putri Yustisi, S.Ak., M.Sc., (Sinta ID: [6742946](#)), Universitas Teknologi Yogyakarta, Indonesia

Candra Romanda, S.E., M.Si, (Sinta ID: [6003875](#)), Institut Rahmadiyah Sekayu, Sumatera Selatan, Indonesia

Herawansyah, SE., M.Ak, (Sinta ID: [6742088](#)), Universitas Bengkulu, Bengkulu, Indonesia

Vika Fitranita, SE., M.Ak, (Sinta ID: [6721445](#)), Universitas Bengkulu, Bengkulu, Indonesia

Mimi Kurnia Ningsih, (Scopus ID: [1271500071](#)) Department of Management, Universitas Muhammadiyah Bengkulu, Bengkulu, Indonesia.

Azuwandri, S.E. M.Si, (Sinta ID: [6772755](#)) Sekolah Tinggi Ilmu Administrasi Bengkulu, Bengkulu, Indonesia

Ridianto, S.E., M.M., (Sinta ID: [6772755](#)), Sekolah Tinggi Ilmu Administrasi Bengkulu, Bengkulu, Indonesia.

Aan Shar, S.E., M.M., (Scopus ID: , Sinta ID: [6770856](#)) Department of Islamic Banking, Universitas Islam Negeri Fatamawati Soekarno, Bengkulu, Indonesia.

Wagini, S.E., M.Ak, (Sinta ID: [6099607](#)) Department of Accounting, Universitas Dehasen Bengkulu, Bengkulu, Indonesia

Nenden Restu Hidayah, S.E., M.Ak, (Sinta ID: [6770520](#)) Department of Accounting, Universitas Dehasen Bengkulu, Bengkulu, Indonesia

Kamelia Astuty, S.E., M.Ak., (Sinta ID: [6771252](#)), Department of Accounting, Universitas Dehasen Bengkulu, Bengkulu, Indonesia

© Copyright Notice

● Author Fee

📊 Visitor Statistic

🔍 Indexing And Abstracting

📄 F.A.Q

CONTACT US



TOOLS



Yun Fitriano, S.E., M.Ak., (Sinta ID: [6650687](#)), Department of Accounting, Universitas Dehasen Bengkulu, Bengkulu, Indonesia

Neri Susanti, S.E., M.Si. , (Sinta ID: [6098786](#)), Department of Accounting, Universitas Dehasen Bengkulu, Bengkulu, Indonesia

Rinto Noviantoro, S.E., Ak., M.Si., CA., (Scopus ID: [89798719777](#))Department of Accounting, Universitas Dehasen Bengkulu, Bengkulu, Indonesia

Eska Prima Monique Damarsiwi, S.E., M.M., (Scopus ID: [57214806879](#) , Sinta ID: [6113888](#)) Department of Management, Universitas Dehasen Bengkulu, Bengkulu, Indonesia

Tito Irwanto, S.E., M.M., (Scopus ID: [0525002435](#) , Sinta ID: [6662618](#)) Department of Management, Universitas Dehasen Bengkulu, Bengkulu, Indonesia

Dr. E. Ahmad Soleh, (Sinta ID: [257695](#)) Department of Management, Universitas Dehasen Bengkulu, Bengkulu, Indonesia.

Dr. M. Rahman Febliansa, (Sinta ID: [6741177](#)) Department of Management, Universitas Dehasen Bengkulu, Bengkulu, Indonesia

Ida Anggriani, Department of Management, Universitas Dehasen Bengkulu, Bengkulu, Indonesia

Yenni Herlina, Department of Management, Universitas Dehasen, Bengkulu, Indonesia, Indonesia

Ida Ayu Made Ermetha Gya Tri, S.E., M.M., (Sinta ID: [6099683](#)) Department of Management, Universitas Dehasen Bengkulu, Bengkulu, Indonesia



VISITOR

Dennis Rydarto Tambunan SE.,MM.,Ak, (Sinta ID: [6772755](#)), Department of Management, Universitas Dehasen, Bengkulu, Indonesia, Indonesia

Siti Hanila,S.E.,M.M, (Sinta ID: [6099703](#)), Department of Management, Universitas Dehasen, Bengkulu, Indonesia, Indonesia

Yudi Irawan, S.E., M.M., (Sinta ID: [6741173](#)) Department of Digital Business, Universitas Dehasen Bengkulu, Bengkulu, Indonesia

Yesi Indian Ariska, S.E., M.Si, (Sinta ID: [6102254](#)) Department of Digital Business, Universitas Dehasen Bengkulu, Bengkulu, Indonesia

Iswidana Utama Putra,S.E,M.M, (Sinta ID: [6701529](#)), Department of Digital Business, Universitas Dehasen, Bengkulu, Indonesia, Indonesia

Habdi, S.Kom., M.Kom, (Sinta ID: [6903305](#)), Department of Digital Business, Universitas Dehasen, Bengkulu, Indonesia, Indonesia

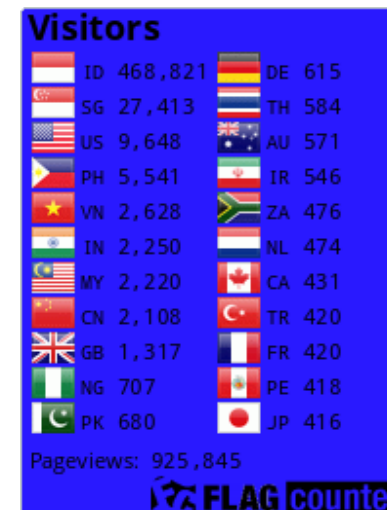
Noni Ardian, S.E., M.M. (Sinta ID:), Universitas Pembangunan Panca Budi Medan, Sumatera Utara, Indonesia

Dwi Septa Ariyani, S.E., M.Si, Ak., CA, Universitas Tridianti, Sumatera Selatan, Indonesia

Dr. Pipit Buana Sari, S.E., M.M. (Sinta ID: [6018656](#)), Universitas Pembangunan Panca Budi, Medan, Indonesia

Suwarno, S.E., M.M., (Sinta ID: [6162329](#)), Universitas Pembangunan Panca Budi, Medan, Indonesia

Daud Arifin, S.E., M.M., (Sinta ID: [6887921](#)), Universitas Pembangunan Panca Budi, Medan, Indonesia



MEMBER OF

ij RELAWAN
JURNAL INDONESIA



Layout Editor

[Heskyel Pranata Tarigan, S.M](#), Universitas Dehasen Bengkulu, Bengkulu, Indonesia

[Vetyca Diana Saputri, S.M](#), Universitas Dehasen Bengkulu, Bengkulu, Indonesia

Secretariat and administration

Ongi Jaya Saputra, S.E., Department of Management, Universitas Dehasen, Bengkulu, Indonesia, Indonesia

[Download SK EDITOR](#)

**CURRENT ISSUE**

[ATOM 1.0](#)[RSS 2.0](#)[RSS 1.0](#)

PUBLISHER



UNIVED Press

ISSN BARCODE



MAKE A SUBMISSION

INFORMATION

For Readers

For Authors

[View MyStat](#)**Faculty of Economic, Universitas Dehasen Bengkulu**

Jl. Meranti Raya No. 32. Sawah Lebar, Kota Bengkulu

Platform &
workflow by
OJS / PKP



EKOMBIS REVIEW: Jurnal Ilmiah Ekonomi dan Bisnis is licensed under a [Creative Commons Attribution-ShareAlike 4.0 International License](#).

Ekombis Review

Jurnal Ilmiah Ekonomi Dan Bisnis

DAFTAR ISI

	Halaman
The Influence Of Financial Inclusion And Financial Literacy On Financial Performance (Case Study Of Bank Sumut Syariah Panyabungan) Ummi Itiah Nasution, Kamilah K, Nur Ahmadi Bi Rahmani	1-10
The Effect Of Profitability And Solvency On Income Smoothing With Good Corporate Governance As A Moderating Variable At Pt Bank Muamalat Indonesia In 2018-2022 Maulida Jam'ah, Andri Soemitri, Aqwa Naser Daulay	11-28
The Influence Of Marketing Mix And Online Reviews On Purchasing Decisions Through Shopee E-Commerce In Medan Perjuangan Subdistrict Edward Alezandro Lbn. Raja, Maria Ayustina Doke Ria, Togu Harlen Lbn.Raja, Karina Silaen, Adiwima Zebua	29-36
Determinants of Financial Reporting Fraud in the Perspective of Fraud Hexagon Annisa Rachmawati, Surya Raharja	37-52
Analysis of the Lack of Interest of MSMEs in Fintech In Medan Denai Putri Indah Fadillah, Muhammad Irwan Padli Nasution, Muhammad Ikhsan Harahap	53-70
The Influence Of Profitability, Investment Opportunity Set And Disclosure Of Islamic Social Reporting On Firm Value (Empirical Study On Companies Registered In The Jakarta Islamic Index 2019-2022) Ahmad Mufid Hanafi, Nursiam	71-80
The Influence Of Discipline, Leadership Style And Work Environment On Employee Performance Through Motivation At The Secretariat General Of The DPR RI Edi Setiawan, Herry Krisnandi	81-102
Development Strategy of Halal Tourism Objects in Medan City Silvia Handayani Siregar, Fauzi Arif Lubis, Nurul Jannah	103-112
The Influence Of Islamic Work Ethics, Leadership, And Compensation On Employee Performance With Job Satisfaction As An Intervening Variable At PT Bank Muamalat KCU Medan Balaikota Dinda Clarita Wirani Putri, Nurlaila, Muhammad Arif	113-128

The Effect Of Entrepreneurs' Financial Literacy And Managerial Competency On Msme Performance Moderated Education Level Sari Wulandari, Sudarno , Muhammad Sabandi	129-136
The Impact Of Drug Abuse On Social And Family Economics In The Perspective Of Sharia Economics (Case Study At The Baitu Syifa Drug Rehabilitation Institution In Medan) Jamilah Harahap, Zulkarnain Nasution, Marliyah	137-148
The Influence Of Remote Work On The Performance Of Remote Workers: The Mediating Role Of Work-Family Conflict And Work-Life Balance Dinda Cornelia, Nasution	149 - 158
The Influence Of E-Service Quality, E-Payment, And Web Design Quality On Customer Satisfaction In Purchasing Gacoan Noodles Through The ShopeeFood Application Dwi Putri Kinasih, Kussudyarsana	159 - 178
Analysis Of Potential Bankruptcy In Blue Bird Tbk And Transindo Utama Tbk Using Springate And Grover Models Indah Sariwati, Fachruzzaman	179 - 188
The Influence of Credit Risk on Company Earnings Management (Empirical Study of Banking Companies Listed on the IDX) Putri Gatria Raisha Ariani, Rini Indriani, Fherza Azh Zahra	189 - 200
Student Decision to Enter College in Bengkulu Ririn Harini, Susiyanto, Onsardi, Fitri Nur Hafidzah	201 - 212
The Effect of Inflation, Government Expenditure, Population, and Wages on Poverty in Sumatra Island 2017-2021 Ai Cahyani, Antoni Sitorus	213 - 220
The Influence Of Financial Knowledge, Financial Attitudes, And Personality On Financial Management Behavior (Student of the Faculty of Economics, Department of Management, Bachelorwiyata Tamansiswa University) Ika Nurmala, Sri Hermuningsih, Gendro Wiyono	221 - 236
Interest in Revisiting Yogyakarta City Among Generation Z Fitri Nur Hafidzah, Ilsa Hayadi	237 - 254
Transformative Interaction Capability on Teamwork Performance: Strategies or Challenges? Perspective On Merchant Marine College Pambudi Widiatmaka, Sukirno, Ali Muktar Sitompul, Fitri Kensiwi, Hartoyo, Kundori, Haniek Listyorini, Sukrisno, Hartoyo Soehari, Pranoto, Karona Cahya Susena	255 - 272
Relationship between Socioeconomic Factors and the Incidence of Stunting In Padang Jaya Village, Bengkulu Utara Regency Melya Ariana, Lela Rospida	273 - 284

Measuring The Financial Performance Of Msmes From The Perspective Of Financial Literacy, Financial Inclusion And Financial Technology Marini, Yusmaniarti Intan Faradilla, Hesti Setiorini	285 - 296
The Influence Of Career Development, Training, And Communication On Employee Performance At The Nusantara Sakti (NSS) Dealer In Bengkulu City Merta Kusuma, Dinda Ermnaya Novaliza	297 - 318
The Impact Of Disclosure Of Leverage, Capital Intensity, Liquidity And Company Size On Tax Avoidance Vela Tri Juliani, Fachruzzaman	319 - 330
The Effect of Social Presence in Live Streaming Shopping on Tiktok Platform Users on Impulse Buying Behavior Qierana Maulidya Fara, Arif Hartono	331 - 342
The Influence Of Division Of Labor And Supervision On Employee Work Effectiveness At PT. Light Riau Mandiri Nidyawati, Darwin Kesuma, Melia Andayani, Vemy Fytaloka	343 - 358
The Influence Of Competence, Independence, Obedience Pressure, And Internal Control System On The Quality Of Internal Auditor Examination Results Fakhri Ramadhan, Rini Indriani, Fachruzzaman	359 - 374
The Influence Of Economic Factors On HDI In Lampung Province In 2018-2022 Nita Sri Rahayu, Barika	375 - 386
The Effect of Current Ratio, Debt to Equity Ratio, Total Asset Turnover and Firm Size on Profit Growth in Food and Beverages Companies Mega Ayu Wulandari, Sri Sudarsi	387 - 396
Analysis of Factors That Influence the Provincial Minimum Wage in SUMBAGSEL Muhammad Afif Alpino, Muhammad Rusdi	397 - 406
Overview Of Umkm Taxpayer Compliance UMKM Cases In Aceh Province Cut Tara Merinda, Rita Meutia, Indayani	407 - 420
Evaluation of Audit Quality Control at the Surakarta City Inspectorate Leonardo Gilang Indra Nugraha, Dewi Kartikasari, Daniel Budi Pratama	421 - 434
Product Quality Improvement Of Stainless Steel Round Trash Bin With Six Sigma And Fuzzy Analytical Hierarchy Process Method At PTXYZ Radinka Deena Zubaira, Wawan Kurniawan, Ratna Mira Yojana	435 - 450

Analysis of Fixed Asset Accounting Treatment Based on PSAK No.16 at PT Buana Finance Tbk Bengkulu Branch Selly Marselina, Yun Fitriano, Abdul Rahman	451 – 458
The Influence of Environmental Knowledge, Green Product Knowledge, Green Word of Mouth, Greenwashing, and Green Confusion as Mediator of Green Purchase Intention Nita Aulia Eka Putri, Rina Suthia Hayu	459 – 476
The Influence of ROA, ROE, NPM, EPS and PER to Market Price on Public Listed Manufacture of Food Products 2018-2022 Mila Hiswatus Sholihah, Heru Tjaraka	477 – 486
The Mediating Role Of Trust In The Influence Of Viral Marketing And Online Consumer Reviews On Purchasing Decisions Skintific Product In TikTok Dewi Murni, Muhartini Salim	487 – 498
Financial Technology and Poverty Alleviation in Indonesia During the COVID-19 : Impact Evaluation Analysis Ririn Nopiah, Retno Agustina Ekaputri, Armelly, Eka Dewi Anggraini	499 – 516
Sustainable Knowledge, Awareness, Attitude And Intention For Gen-Z Sustainable Consumption Rubiyatno, Maria Angela Diva Vilaningrum W, Ima Kristina Yulita, Maria Theresia Ernawati, Trisnawati Rahayu	517 – 526
The Role of Employee Engagement in Green HRM to Create Sustainable Humanist Performance Aldi Friyatna Dira, Gena Prasetya Noor, Mic Finanto Ario Bangun, Muhammad Aziz Winardi N, Fahmi Kamal, Kurniawan Prambudi Utomo	527 – 538
Analysis Of Islamic Banking Financial Performance Before And After The Merger Irma Juniar Frestiva, Muhammad Sholahuddin	539 – 548
Role Moderation Of Love Of Money On Accounting Students' Ethical Behavior Shania Savira, Arum Amalia Masyitah	549 – 558
The Influence Of Investment On Economic Growth In Sumbagsel I Gusti Ayu Suji Adnyani, Azansyah	559 – 568
Impact of the Human Development Index, Economic Growth, Investment, and Government Expenditure on the poverty of districts and cities in Bengkulu Province Febria Wulandari, Roosemarina Rambe Anggraini	569 – 578

Pandemic and Financial Performance: Pre and During Pandemic Effect of Covid-19 on Financial Performance of Pension Funds Defined Benefit Plans and Defined Contribution Plans Andi Reski Almaida Dg Macenning, Meyjerd Rombebunga, Poltak Simanullang	579 – 590
Excellent Service Based on Human Capital and Leader Mindfulness (Survey of Sharia Hotel Employees in Bandung) Tatiek Ekawati Permana, Tjutju Yuniarsih, Eeng Ahman, Rofi Rofaida	591 – 606
Pengaruh Strategi <i>Segmenting, Targeting, Positioning</i> Terhadap Keputusan Pembelian Baju Di PTM Bengkulu Anggun Kusuma Wardhani, Lela Rospida	607 – 616
The Influence of Social Assistance Expenditure, Education, and Unemployment on Poverty in Districts/Municipalities of D.I. Yogyakarta Province 2013-2022 Yulida Wanda, Azansyah	617 – 626
The Influence of Liquidity, Capital Structure and Profitability on Company Value (Case Study of Property and Real Estate Companies Listed on the IDX 2018-2022) Anik Rusilawati, Sri Hermuningsih, Gendro Wiyono	627 – 634
The Influence Of Job Engagement, Job Placement, and Job Training On The Job Satisfaction Of PT Employees Grand Racing Yogyakarta Prayekti, F Veri Anggara, Epsilandri Septyarini	635 – 646
Utilization Of Big Data In Business Analysis In Micro, Small And Medium Enterprises (MSME) In Order To Increase The Scale Of Economic Business In The Sumatra Region Edi Suranta Tarigan, Wisnu Mawardi	647 – 658
Analysis Of Factors Affecting Economic Growth In Banten Province Riko Dwi Saputra, Muhammad Rusdi	659 – 666
The Implementation Of Risk Management In The Ministry Of Energy And Mineral Resources' New Electricity Connection Assistance Program Indira Cempakasari, Neneng Sri Rahayu, Luki Karunia	667 – 674
The Influence Of Social Media, Financial Literacy, Self-Control And Financial Attitudes On Financial Behavior (Student Of The Faculty Of Economics Univ. Sarjanawiyata Tamansiswa) Yetti Saripah, Risal Rinofah, Pristin Prima Sari	675 – 684
Customer Satisfaction In High Demand And Low Supply Of Vegetable Oil In Indonesia Yosua Amendson Pupella, Nurdayadi	685 – 702

The Analysis of the Influence of Foreign Direct Investment and Domestic Direct Investment on Economic Growth in the Province of Bengkulu Reli Sapitri, Abdullah	703 – 710
Literacy and Knowledge of Financial Behavior Indrawati Mara Kesuma, Ronal Aprianto, Nora Puspita, Suyadi, Suwarno, Weni Susanti	711 – 722
The Effect of Location, Service Quality and Price on Consumer Purchasing Decisions(Case Study on Consumers of Mak Hengky Restaurant Air Manna South Bengkulu) Herry Novrianda, Lestari, Marliza Ade Fitri	723 – 732
Contribution of Tailoring Business in Meeting Family Economic Needs from an Islamic Economic Perspective (Study on Tailors in Sukakarya District, Musi Rawas Regency) Fidiyah Rayina Sugesti, Supardi Mursalin, Romi Adetio Setiawan	733 – 740
The Effect of Customer Relationship Marketing and Trust on Customer Loyalty (Case Study on Jne Nusa Indah Customers Bengkulu City) Dea Ananda Regita, Ade Tiara Yulinda	741 – 748
Analysis Of The Influence Of Electronic Word Of Mouth (E-Wom) And Social Media On Purchase Intentions Mediated By Brand Image In E-Shopping Alya Fathur Romadhon, Ihwan Susila	749 – 760
The Effect of Live Streaming on Impulse Buying from an Affordance Perspective on Tiktok Platform Aldi Maulana Putra, Ilsya Hayadi	761 – 772
Management of Operational Assistance Funds (BOS) in State Madrasah Tsanawiyah 15 Jakarta Dian Rosdiana , R. Luki Karunia, Edy Sutrisno	773 – 788
The Influence of Human Resources Audit on Employee Job Satisfaction (A Case Study at PT. Bank Pembangunan Daerah West Java and Banten, Tbk (BJB) Central Office Bandung) Hawa Az-Zahra Kifayah, Syakieb Arsalan	789 – 796
The Impact of Labor, Investment, and Human Development Index on Economic Growth: A Study of East Kalimantan Province Febrian Alexander Nababan, Armelly	797 – 804
The Influence of Training and Work Discipline on the Performance of PT Kereta Api Indonesia (Persero) Building Unit Employees Divre III Palembang LRT SUMSEL Maintenance Area Triana Agustini, Jamilah Pramajaya, Bayu Singgalang	805 – 814

The Impact Of Digital Transactions In The Reconciliation Process And Preparation Of Financial Reports Of Culinary Msmes In Palembang City Widarti, Yeni Alfiana, Della Wandira	815 – 828
Efficiency Level Of Zakat Management In Palopo City Muhammad Ilyas, Ema Sari, Fitriana Umar	829 – 836
The Level Of Islamic Financial Literacy And Islamic Financial Inclusion Of Students In The Islamic Capital Market Herlina Yustati, Heri Junaidi, Asnaini	837 – 844
Green Accounting as a Mediation Variable, and Media Exposure as a Moderation Variable in the Relationship Between Profitability and CSR Disclosure Mardalena Septi Mi Darti, Nurna Aziza	845 – 860
The Influence Of Tax Justice And Tax Understanding On Tax Evavasion (Perceptions Of Students' Accounting Study Program, Faculty Of Economics, Indonesian Advent University) Elizabeth Vania Permata, Remista Simbolon	861 – 870
The Influence Of Risk Management Committee And Family Ownership With Company Performance In Indonesia: Busy Directors As Moderating Variable Ika Dewi Agustin, Cynthia Afriani Utama	871 – 886
The Effect of Work Environment and Leadership on Employee Performance at the Kaur Regency DPRD Secretariat Liasmawati, Ida Anggriani, Yudi Irawan Abi	887 – 898
The Effect of Organizational Trust, Brand Image, and Religiosity on Donation Decision Making with Information Quality as an Intervening Variable at the Integrated Village Service Foundation Lendy Tampi, Hilarius Bambang Winarko	899 – 910
Analysis of Production and Inventory Control of Batik Raw Materials According to Islamic Economic Perspective (Case Study at SME Santi Batik) Ratina Fitri, Eka Sri Wahyuni, Yenti Sumarni	911 – 928
Effect of Liquidity Ratio and Leverage Ratio on Profitability (Study of PT. Bank Muamalat Indonesia Tbk) Selvia Depita Sari, Yun Fitriano, Abdul Rahman	929 – 936
Analysis of the Effect of Capital Structure, Dividend Policy, and Liquidity on Firm Value (Study on Building Construction Sub-Sector Companies Listed on the IDX in 2017-2019) Yosepan Selly, Gendro Wiyono, Ratih Kusumawardhani	937 – 948
The Influence of Investment Efficiency on Financial Performance Azzahra Kurnia Fitri, Fenny Marietza	949 – 958

Analysis of Gas Station Financial Management to Prevent Fraud and Anticipate the Impact of Revenue Fluctuations Chylvia Febelia Elvionita, Theresia Dwi Hastuti	959 – 970
Improving Sme Accountability In The M-Wallet Era Postadoption Implications Tri Puspita Sari, Nurna Aziza	971 – 980
Good Corporate Governance and Corporate Values with Profitability as a Moderating Variable in Manufacturing Companies Listed on The Indonesia Stock Exchange for the 2012-2021 Period Yudi Partama Putra, Retno Triono, Hesti Setiorini, Desi Fitria, Ahmad Sumarlan	981 – 996
The Influence Of Accounting Knowledge, Socialization Of Accounting Standards, Education And Business Scale On The Quality Of Financial Statements (Study on SME in Bengkulu City) Annisa Qurrata A'yun, Isma Coryanata	997 – 1006
Comparison Of Financial Performance Based On The Implementation Of PSAK 30 And PSAK 73 On Leases In Energy Industry Companies Lisca Putri, Nurna Aziza	1007 – 1016
The Analysis of Product Placement on Brand Awareness and Brand Attitude of Kopiko Candy in Season 2 of Taxi Driver Korean Drama Chalista Regina Br. Nadeak, Rahmat Setiawan	1017 – 1026
The Influence Of Promotional Strategies And Social Media On Purchase Decisions (Case Study on Buyers Using Ms Glow Skincare in Bengkulu City) Meilaty Finthariasari, Herwan MDK, Zeta Alvio Nita	1027 – 1036
The Influence of CEO Characteristics on the Corporate Gov-ernance Index (CGI) with Corporate Secretary Characteristics as a Moderating Variable Moh. Baqir Ainun, Tyasha Ayu Melynda Sari	1027 – 1036
The Effect Of Tax Avoidance On Firm Value With Earnings Management As A Mediation Variable Dinda Olanda, Fenny Marietza	1037 – 1050
Determinant Of Indonesian Commodity Coffee Export In The Era Of Covid-19 Pandemic Erlambang Budi Darmanto, Suhartono, Yunita Satya Pratiwi, Moh. Adenan	1051 – 1060
The Influence Of Employee Selection On Employee Performance With Career Development As A Mediation Variable Case Study At PT Ilmukomputercom Braindevs Sistema Sonia Christine Panjaitan, Agus Sugiarto	1061 – 1076

- Model Of Green Purchase Intention Environmentally Friendly Packaging In The Micro And Small Business Food Industry In Riau Province 1077 - 1094
Tengku Firli Musfar, Henni Noviasari, Dian Pratiwi
- The Influence Of Profitability, Company Size, Media Exposure, And Leverage On Carbon Emissions Disclosure 1095 - 1108
Aldita Diva Syahdanti, Fenny Marietza
- The Influence Of The Implementation Of Good Corporate Governance On The Quality Of Financial Performance At Muamalat Bank In Sorong District In 2018-2022 1109 - 1122
Lidya Aprilia Jumroh
- Social Capital,Digital Networks and Entrepreneurship for Sustainability of Farming in Lumar District, Bengkayang Regency 1123 - 1132
Usman, Yeremia Niaga Atlantika, Veneranda Rini Hapsari, Sabinus Beni
- Financial Literacy And Social Capital On Performance For Msme Sustainability 1133 - 1144
Wawan Ruswandi, Rosanna Wulandari, Eris Juliansyah, Dewi Resmanasari, Virgy Putri M
- Result of Digital Marketing, Product Quality and Mediation Customer Satisfaction 1145 - 1156
Buyung Romadhoni, Akhmad, Muhammad Rusydi, Mustaking
- Delegation of Authority and Employee Performance Affect Management Decision Making Effectiveness in PT. Solusi Guna Sejahtera-Bekasi 1157 - 1166
Akka Latifah Jusdienar, Ahmad Firdaus, Yuniria Zendrato
- The Role Of Managerial Ownership In The Relationship Of Debt Policy To Shareholder Value In Financial Companies In Indonesia 1167 - 1176
Putri Regina Prayoga, Nikmah
- The Correlation Of Competence, Independence, Accountability And Compliance With The Code Of Ethics With The Auditor Performances In Inspectorate Of Bengkulu Province 1177-1192
Nanda Lucky Fathonah, Abdullah
- The Influence Of Social Media Marketing Instagram on Interest in Buying Books at Gramedia.Com 1193 - 1202
Nahda Ratu Aulia, Cecep Safa'atul Barkah
- The Development of "Batik Sendang" and Integrated Marketing Communication Strategy using a Mathematical Model Approach 1203 -1212
Nur Ilmayasinta, Novitasari, Ayu Fita Sari
- Analysis Of The Presentation Of Financial Statements Of A Non-Profit Organization (Case Study Of Independent Private Foundation Orphanage Bengkulu City) 1213 - 1226
Neri Susanti, Rinto Noviantoro, Anggini

- The Influence of Work Experience and Motivation on Employee Performance PT. Guna Alkes Mandiri Bengkulu
Reni Indriani, Afifah Dwi Mardhatilla 1227 - 1236
- The Influence of Leadership, Motivation, Environment and Discipline on Work Performance of the North Bengkulu Argamakmur Environmental Service
Muhamad Galy Njoman Ari Pribowo, Antonius 1237 - 1246
- Analysis of Spatial Patterns and Determinants of Poverty in South Sumatra Province
Nazipawati, Tri Mulyaningsih 1247 - 1260
- The Effect of Service Quality and Facilities on Hospitalization Patient Satisfaction Hasanuddin Damrah Manna Hospital
Mohammad Ansyori, Ahmad Soleh, M. Rahman Febliansyah 1261 - 1274
- The Influence Of Brand Characteristics And Emotional Branding On Purchasing Decisions At Coffee Shop Bengkulu
Ferdian Fachrie Hero Putra, Anzori, Eska Prima Monique Damarsiwi 1275 - 1282
- The Effect Of Job Training, Work Motivation, And Career Development on Employee Performance at PT. Sinar Harapan Roof Kebun Tebeng Bengkulu City
Arda Pratiwi, Islamuddin 1283 - 1292
- The Influence of Lifestyle and Product Quality on Consumer Purchasing Decisions at Bandung Distro Manna South Bengkulu
Jiri Tri Putra, Ermy Wijaya, Yesi Indian Ariska 1293 - 1298
- The Effect Of Household Consumption Expenditure, Government Expenditure And Per Capita Income On Economic Growth In Sidoarjo Regency
Hanum Prawita Lestari, Ignatia Martha Hendrati 1299 - 1304
- Improving Employee Productivity Through Supervision: A Case Department of Manpower, Indramayu
Qodariah, Syaiful Anwar 1305 - 1314
- Causality Analysis Between Unemployment, Poverty, and Economic Growth in the Southern Sumatra Region
Ferdinand Anjas Karo Karo, Yusnida 1315 - 1328
- The Influence of Compensation and Work Environment on Employee Performance at the BAPPEDA (Regional Development Planning Agency) Office of Bengkulu Province
Chaterine Sianturi, Nasution 1329 - 1336

- Evaluation Of The Implementation Process Of PSAP 16 Service Concession Agreement – Grantor On Toll Roads At The Ministry Of Public Works And Housing 1337 – 1348
Stellaria Dyah Prametisiwi, Dwi Martani
- Increasing SMEs Productivity Through Digital Transformation Adoption of Software as a Service and Development of Entrepreneurial Attitudes 1349 –1360
Endar Pradesa, Ratih Eka Sakti, Metha Aditya Putri
- Analysis of Internal Control and Fraud Prevention Efforts in Public Sector Accounting 1361 – 1368
Adelya Putri Kesuma, Fachruzzaman
- Analysis Of Factors Affecting Provincial Minimum Wages In Indonesia 1369 – 1378
Richardo Simanjuntak, Yefriza
- The Effect of Corporate Governance on ESG Investment Moderated by Gender Diversity on the Board of Directors 1379 – 1396
Chairiska Putri Meilinda Siregar, Fenny Marietza
- The Impact of Decreasing Rubber Prices on Consumption Patterns of Society from the Perspective of Islamic Economics 1397 – 1406
(A Case Study in Padang Pelawi Village, Sukaraja District, Seluma Regency)
Ahmad Cholil, Romi Adetio Setiawan, Uswatun Hasanah
- The Influence of Training and Motivation on Employee Performance at the Regional Development Planning Agency of Bengkulu Province 1407 – 1416
Stefan Surya Jaya, Nasution
- The Effect of the Fraud Pentagon on Fraudulent Financial Statements and Their Impact on Funding Decisions 1417 – 1438
Nur Hidayah Kusumaningrum Fadhillah, Muhammad Zulvan Dwi Hatmoko, Meutia Riany, Ucu Tuti Alawiyah, Khairul Mujahidi
- Measuring Efficiency Of Family And Non-Family Firm Amidst Covid-19 Times: Do They Perform Differently? 1439 – 1452
Hadi Wibowo, Adler Haymans Manurung, Roy Sembel, Erika Pritasari Wybawa
- The Effect of Teacher Personality Competence on Accounting Learning Motivation in XII IIS Class Students of SMA Negeri 2 Barru 1453 – 1458
Ira Ayu Puspitasari, Nuraisyiah, Muhammadiyah Azis, M.Ridwan Tikollah, Sahade
- The Influence Of Entrepreneurial Knowledge, Adversity Intelligence, And Self-Efficacy On Students' Entrepreneurial Intentions 1459 – 1468
Fitriani Latief, Dirwan, Ahmad Firman

- The Influence of Influencers on Consumer Purchase Intention on the Instagram Social Media Platform 1469 - 1480
Ardi Wahyu Wibowo, Arif Hartono
- The Influence of Competency and Work Discipline on Employee Performance at the Lubuklinggau City Transportation Service Office 1481 - 1486
Fitri Arnita Purindra, Hardi Mulyono, Wisdaliya Maya Sari
- The Influence of Influencer Marketing and Online Customer Reviews on Purchase Intention Through the Perceived Value of Cosmetic Products on Tiktok Shop (An Empirical Study on Students in the City of Pekanbaru) 1487 - 1502
Azzahra, Awliya Afwa, Moniko
- Analysis of Factors Affecting the Motivation of Honorary Teachers in Border Areas 1503 - 1510
Eligia Monixa Salfarini, Yeremia Niaga Atlantika, Rissa Ayustia
- The Influence of Psychological, Spiritual Dimensions and Modernization of the Tax Administration System on Individual Taxpayer Compliance 1511 - 1520
Rika Selpi Yonita, Halimatusyadiah
- The Effect of Individual Characteristics and Work Ethic on Employee Performance Trough Organization Commitment as Mediaton in Public Sector 1521 - 1530
Endartanto, Kusuma Candra Kirana, Syamsul Hadi
- Analysis of Changes In Risk Management Implementation At PT. Feni East Halmahera Based On ISO 31000:2018 1531 - 1540
Adine Khairunisa Nadya, Sylvia Veronica Siregar
- Management Analysis of Sleman Regency Local Government Operational Asset Management 1541 - 1550
Rifki Khoirudin
- The Influence Of The Environment, Business Capital And Creativity Of Marketing Strategies In Increasing The Competitiveness Of MSMES In Bengkulu City 1551 - 1562
Blasius Manggu, Sabinus Beni, Silvester, Kusnanto
- Analysis factors of Tourist Decisions' on Melukat Tradition as a Spiritual Tourism 1563 - 1570
Hubertina Karolina Ngarbingan, Anisa Zahwa Akbara
- Sri Kehati Stock Index Portfolio Optimization 1571 - 1584
Deby Indah Mayriska, Hermanto Siregar, Nimmi Zulbainarni
- Cake Business Development through a SWOT Analysis Approach 1585 - 1592
Ahmad Firman, Fitriani Latief, Dirwan

The Effect of Financial Risk on Financial Performance in the Non-Cyclical Consumer Industry Listed on the BEI 1593– 1606

Dwi Wijayanty , Monic Indrianisca, Astrid Dila Aurelia, Laras Olivia, Farah Margaretha Leon

The Influence Of Transformational Leadership Style, Compensation, And Working Environment Employee Loyalty At Pt Pradipta Bhumi Construction 1607 - 1616

Epsilandri Septyarini, Tri Ratna Purnamarini, Yoga Zulfika

Exploring Creating Shared Value In Corporate Social Responsibility Initiatives: A Case Study Of PT Nusa Halmahera Minerals 1617 - 1628

Ruliyanto Syahrain, Muhammad Hasnin, Faradisa Bachmid

The Influence of Leadership Style, Organizational Commitment, and Organizational Culture on Managerial Performance at PT POS Indonesia (Persero) Cirebon Branch 1629 - 1640

Dwi Ratna Sari, Kartono

The Influence Of Transformational Leadership Style, Compensation, And Working Environment Employee Loyalty At Pt Pradipta Bhumi Construction 1607 - 1616

Epsilandri Septyarini, Tri Ratna Purnamarini, Yoga Zulfika

Exploring Creating Shared Value In Corporate Social Responsibility Initiatives: A Case Study Of PT Nusa Halmahera Minerals 1617 - 1628

Ruliyanto Syahrain, Muhammad Hasnin, Faradisa Bachmid

The Influence of Leadership Style, Organizational Commitment, and Organizational Culture on Managerial Performance at PT POS Indonesia (Persero) Cirebon Branch 1629 - 1640

Dwi Ratna Sari, Kartono

The Influence of Celebrity Instagram Endorsement and Word of Mouth on Online Purchase Decisions with Brand Image as a Mediator 1641 - 1662

Ni Kadek Aprina Jayanti

Online Impulsive Buying Behavior (OIBB) Influenced By Hedonism, Resource Availability, And Shopping Convenience Moderated By The Ease Of Using Digital Payment Methods 1663 - 1678

Elisabeth Krisna Dhewayanti

SERTIFIKAT

Direktorat Jendral Pendidikan Tinggi, Riset dan Teknologi
Kementerian Pendidikan, Kebudayaan, Riset dan Teknologi Republik Indonesia



Kutipan dari Keputusan Direktorat Jendral Pendidikan Tinggi, Riset, dan Teknologi
Kementerian Pendidikan, Kebudayaan, Riset dan Teknologi Republik Indonesia

Nomor: 79/E/KPT/2023

Peringkat Akreditasi Jurnal Ilmiah Periode I Tahun 2023

Nama Jurnal Ilmiah:

EKOMBIS REVIEW: Jurnal Ilmiah Ekonomi dan Bisnis

E-ISSN: 27164411

Universitas Dehasen Bengkulu

Ditetapkan Sebagai Jurnal Ilmiah:

TERAKREDITASI PERINGKAT 3

Akreditasi Berlaku selama 5 (lima) Tahun, yaitu:
Volume 10 Nomor 2 Tahun 2022 sampai Volume 15 Nomor 1 Tahun 2027
Jakarta, 11 May 2023

Plt. Direktur Jendral Pendidikan Tinggi, Riset, dan Teknologi

TERAKREDITASI



Prof. Ir. Nizam, M.Sc., DIC, Ph.D., IPU, ASEAN Eng
NIP. 196107061987101001



Product Quality Improvement Of Stainless Steel Round Trash Bin With Six Sigma And Fuzzy Analytical Hierarchy Process Method At PTXYZ

Radinka Deena Zubaira¹⁾; Wawan Kurniawan²⁾; Ratna Mira Yojana³⁾

^{1,2,3)} Study Program of Industrial Engineering, Universitas Trisakti

Email: ¹⁾ radinka063001900008@std.trisakti.ac.id; ²⁾ wawan.kurniawan@trisakti.ac.id; ³⁾ ratna.mira@trisakti.ac.id

No Hp/ WhatsApp: 08111621266

How to Cite :

Zubaira, R.D., Kurniawan, W., Yojana, R.M. (2023). Product Quality Improvement Of Stainless Steel Round Trash Bin With Six Sigma And Fuzzy Analytical Hierarchy Process Method At PT.XYZ. EKOMBIS REVIEW: Jurnal Ilmiah Ekonomi Dan Bisnis, 12(1). doi: <https://doi.org/10.37676/ekombis.v12i1>

ARTICLE HISTORY

Received [03 Juli 2023]

Revised [10 November 2023]

Accepted [02 December 2023]

KEYWORDS

Six Sigma, DMAIC, Critical To Quality (CTQ), Defects Per Million Opportunities (DPMO) Failure Mode Effect Analysis (FMEA), Fuzzy Analytical Hierarchy Process.

This is an open access article under the [CC-BY-SA](https://creativecommons.org/licenses/by-sa/4.0/) license



ABSTRACT

PT. XYZ is a manufacturing industry that produces various cleaning equipment. One of the products that has a high level of defects are trash bins made of stainless steel. The purpose of this research is to improve the quality of stainless steel waste products. The method used is Six Sigma and Fuzzy Analytical Hierarchy Process. In the Define stage, the types of defects found were body dents, scratches, spots, and rough lids. In the Measure stage, the initial DPMO value obtained is 3.422. In the Analyze stage, the results of the analysis process are defects with the highest Risk Priority Number of 280. The next stage is Improve, where defects with the highest RPN value are prioritized for proposed improvements using Fuzzy AHP. Based on the results of the Fuzzy AHP assessment, it was found that the highest weight was alternative 3, namely the machine must be cleaned regularly after being used at 0.4322, alternative 2, namely the addition of material handling to facilitate product transfer of 0.2048, and alternative 4, namely the establishment of SOPs for product handling. of 0.2041. After the Improve stage, the final stage in the form of Control is carried out to see whether the implementation of the proposed improvements has a positive impact on the company. The DPMO results obtained after implementation were 3.6061.

INTRODUCTION

PT. XYZ is a manufacturing industry that produces cleaning equipment. PT. XYZ was founded in 2010 and has been present providing superior products to consumers and establishing cooperative relationships with national scale business partners in Indonesia. In this research, it is conducted on the production process of stainless steel trash bin from PT. XYZ because it is a product with the highest defect value and exceeds the company's tolerance limits. The company's defect tolerance limit is 5%. The historical data on the production results of stainless steel round trash bin used is data for the period January to June 2022 (Table 1). The highest percentage of defects seen in Table 1 was in February

at 10.86%. Apart from that, in March, May and June, the number of defects obtained still exceeded the company's tolerance limits.

Table 1. Historical Data on Production of Round Stainless Trash

Period	Round Stainless Trash Bin		
	Production Quantity	NG Product	Defect Percentage
January	550	23	4,18%
February	700	76	10,86%
March	300	17	5,67%
April	450	19	4,22%
May	600	44	7,33%
June	650	63	9,69%

Source : Primary Data of PT XYZ, 2022

The company has implemented a quality control process by carrying out regular inspections of the production process and checking raw materials before use to ensure that the final product has no defects. However, defective products were found in the company hence the quality improvements are needed. Improvements to the quality of this stainless steel round trash bin product refer to the quality dimensions in the form of durability, aesthetics, and conformance to standards. These three quality dimensions become a reference for good product quality to be accepted by costumers of round stainless steel trash bin at PT. XYZ. The method used in this research to improve the quality of stainless steel trash bin products are the Six Sigma and Fuzzy AHP methods. Using the six sigma method can help understand and identify the causes of problems to improve product quality. The use of the six sigma method focuses on reducing variance to minimize the opportunity for defects to occur (Subana et al., 2021). Then the Fuzzy AHP method is used which is an improve level of AHP, because the AHP method as shortcomings in the form of a lack of ability to overcome uncertainty and vague decisions in decision making (Doaly et al., 2019). Therefore, by using the fuzzy AHP method, aspects of uncertainty and vague decisions can be handled well so that the resulting decisions are more accurate and in line with the company's needs.

LITERATURE REVIEW

Six Sigma

The Six Sigma method is a method or way to achieve operational performance, only finding 3.4 defects in every one million activities or opportunities. Six Sigma is driven by an understanding of facts, data, and statistical analysis. Six Sigma also provides benefits including cost reduction, increased productivity, market share growth, defect reduction, and production or service development. In its application, Six Sigma has five steps to improve performance, namely Define, Measure, Analyze, Improve and Control, which is then abbreviated as DMAIC, so that problems or opportunities, processes and customer needs must be verified and updated at each step(Hernadewita et al., 2019).

Six Sigma creates a reliable process that eliminates waste, reduces variation and improves process flow. Internal changes that can occur using the Six Sigma method include organizational culture, perception of methodology, reduction of losses, and

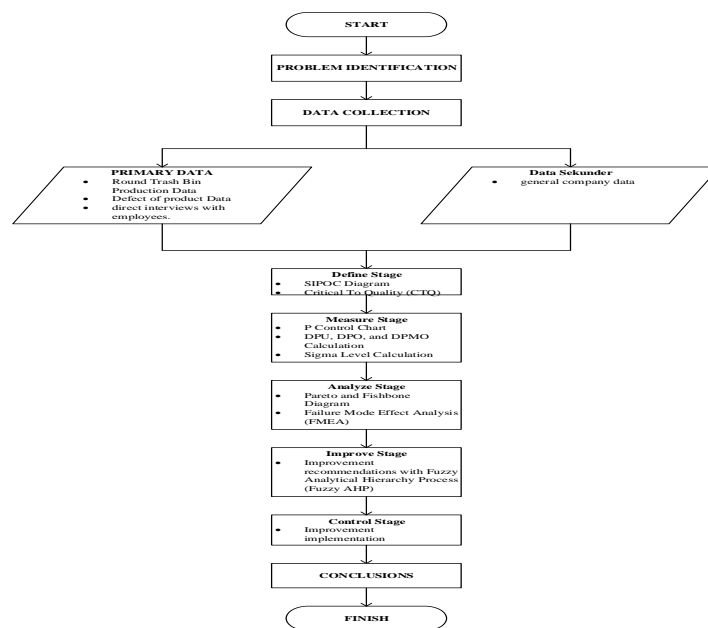
transfer of knowledge from projects to company knowledge. External changes, namely benchmarking with Six Sigma organizations, market competition, and customer satisfaction (Yadav et al., 2019). DMAIC is a structured problem solving procedure and is widely used in quality and process improvement. DMAIC is often associated with Six Sigma activities and almost all Six Sigma implementations use the DMAIC process for project management and completion. However, DMAIC does not have to be formally related to Six Sigma, and can be used independently of organizational use of Six Sigma (Montgomery, 2013).

Fuzzy Analytical Hierarchy Process (Fuzzy-AHP)

Fuzzy-AHP is a development methodology for AHP. The Fuzzy-AHP method is basically the same as the AHP method, but the Fuzzy-AHP method sets the AHP scale into a fuzzy triangular scale for priority access (Septiani et al., 2021). Analytical Hierarchy Process (AHP) is a decision-making methodology developed in 1980 by Saaty. AHP is used to simplify the decision-making process by using quantitative and qualitative techniques to decompose complex problems into several sub-problems. The Fuzzy method is used in AHP to cover AHP errors such as problems with criteria that have a more subjective nature (Khoiriah et al., 2020)

METHODS

The method that will be used in this research is DMAIC in Six Sigma. In the initial stage, the Define process is carried out to define the problems that occur. Next, the Measure process is carried out for data measurement. Then proceed with the Analyze process to analyze the data to identify the root of the existing problem. At the analyze stage, the Failure Mode Effect Analysis (FMEA) method is used to define the product process, collect data on problems that may occur, assess problems in terms of impact, probability and detection, calculate the Risk Priority Number (RPN), and take action to reduce risk (Lutfianto & Prabowo, 2022). The results of FMEA are dominant problems which are corrected subject at the next stage. At the Improve stage, the results from the previous stages need to be followed up with proposals for improvement. Decision making in the Improve stage is carried out using the Fuzzy Analytical Hierarchy Process (Fuzzy AHP) method. The Fuzzy AHP method in six sigma is used to select the best alternative. The creation of the hierarchical structure contained in the initial step of Fuzzy AHP is based on the FMEA results at the Six Sigma stage obtained in the Analyze step (Kurniawan et al., 2022)

Figure 1. Methods Flowchart

Source : Data Processing, Microsoft Visio, 2022

RESULTS

Define

At the Define stage, the SIPOC (Supplier-Input-Process-Output-Customer) diagram is used, which is a diagram to map all processes and elements involved in the product manufacturing process (Montgomery, 2013). Defects can be defined as any deviation in performance from Critical To Quality (CTQ) (Singh & Lal, 2016)





Table 2. SIPOC Diagram

Supplier	Input	Process	Output	Customer
Raw Material Warehouse	Stainless Steel Sheet	Transfer of Raw Materials	Stainless Steel Sheet	Shearing Machine
Shearing Machine	Stainless Steel Sheet	Raw Material Measurement	Stainless Steel Sheet with sizes according to cutting	Shearing Machine
Shearing Machine	Stainless Steel Sheet with sizes according to cutting	Raw Material Cutting	Trash Bin Body, Trash Bin Lid, Trash Bin Base	Pond Machine
Pond Machine	Trash Bin Lid, Trash Bin Base	Base and Lid shape printing	Trash Bin Lid, Trash Bin Base	Stamping Press Machine, Assembly Area
Pond Machine	Trash Bin Body	Punching on the body side	Trash Bin Body	Plate Roll Machine
Stamping Press Machine	Trash Bin Lid, Trash Bin Base	Pressing Process	Trash Bin Lid, Trash Bin Base	Argon Welding Machine
Plate Roll Machine	Trash Bin Body	Bending Process	Trash Bin Body	Argon Welding Machine
Argon Welding Machine	Trash Bin Body, Trash Bin Base	Joining and Welding	Trash Bin	Assembly Area
Assembly Area	Trash Bin, Trash Bin Lid	Assembly	Trash Bin	Assembly Area
Assembly Area	Trash Bin	Finished Product Inspection	Trash Bin	Assembly Area
Packaging Area	Trash Bin	Product Packaging	Trash Bin	Finished Goods Warehouse

Source : Observation and interview results, 2022

The supplier describes the initial material or goods that will be worked on in the production process, the input is the material that is available and will be used, the process is the work steps, the output is the product produced in the process, and the customer is the next step that will be carried out. After identifying the SIPOC Diagram, the next step is identifying Critical To Quality (CTQ) or the main characteristics that will influence customer satisfaction (Primahesa & Ngatilah, 2022)

Table 3. Critical To Quality (CTQ)

No	Type of Defect	Image of Defect	Defect Description
1	Body Dent		The surface of the trash bin body is dented, reducing the appearance and durability of the trash bin
2	Scratches		Scratches on the body, lid and base of the trash bin make the product quality less good and the appearance less attractive
3	Spots on the body		Spots that make the body dirty are caused by the production floor in the packaging area being less than clean
4	Rough lid		The surface of the lid is rough so it cannot be used or is dangerous for customers, caused by a lack of pressure during the pressing process

Source : Observation and interview results, 2022

In Table 3 Critical To Quality (CTQ), 4 types of defects were obtained based on direct observations and interviews with production section operators. The types of defects found in round trash bin products made from stainless steel are attributes.

Measure

At the measure stage, the P control chart is used to determine whether defects in the product are within the control limits or not. The following are the calculation results for the P control chart graph:

Table 4. P Control Chart Calculation

No	Observation Date	Total Product (Units/day)	Defect Total	Defect Percentage	CL	UCL	LCL
1	01/09/22	50	6	0.12	0.109	0.2412	0
2	05/09/22	75	12	0.16	0.109	0.217	0.001
3	07/09/22	100	11	0.11	0.109	0.2025	0.0155

No	Observation Date	Total Product (Units/day)	Defect Total	Defect Percentage	CL	UCL	LCL
4	13/09/22	80	4	0.05	0.109	0.2135	0.0045
5	15/09/22	30	5	0.1667	0.109	0.2797	0
6	19/09/22	25	4	0.16	0.109	0.296	0
7	20/09/22	65	10	0.1538	0.109	0.225	0
8	23/09/22	75	8	0.1067	0.109	0.217	0.001
9	26/09/22	25	2	0.08	0.109	0.296	0
10	27/09/22	70	9	0.1286	0.109	0.2207	0
11	28/09/22	40	4	0.1	0.109	0.2568	0
12	29/09/22	35	1	0.0286	0.109	0.267	0
13	03/10/22	75	8	0.1067	0.109	0.217	0.001
14	07/10/22	50	7	0.14	0.109	0.2412	0
15	12/10/22	40	4	0.1	0.109	0.2568	0
16	14/10/22	70	3	0.0429	0.109	0.2207	0
17	19/10/22	95	6	0.0632	0.109	0.2049	0.0131
18	21/10/22	40	2	0.05	0.109	0.2568	0
19	25/10/22	50	7	0.14	0.109	0.2412	0
20	26/10/22	30	7	0.2333	0.109	0.2797	0
21	27/10/22	25	5	0.2	0.109	0.296	0
22	07/11/22	50	4	0.08	0.109	0.2412	0
23	08/11/22	30	5	0.1667	0.109	0.2797	0
24	11/11/22	100	12	0.12	0.109	0.2025	0.0155
25	14/11/22	75	7	0.0933	0.109	0.217	0.001
26	16/11/22	50	4	0.08	0.109	0.2412	0
27	22/11/22	90	9	0.1	0.109	0.2075	0.0105
28	25/11/22	100	8	0.08	0.109	0.2025	0.0155
29	29/11/22	40	5	0.125	0.109	0.2568	0
30	30/11/22	45	9	0.2	0.109	0.2484	0
Total		1725	188				

Source : Processed Data from Observation, 2022

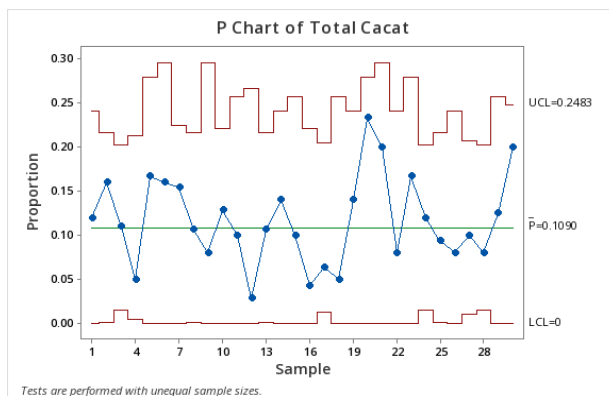
In table 4, first the results of the center line calculation are obtained, namely the division of total defects by the total production quantity. Next, the upper control limit and lower control limit are calculated to determine the highest and lowest limits of the defect data (ANDRIANI et al., 2021). The following is one of the UCL and LCL calculations for the observation date 01/09/2022:

$$\begin{aligned}
 \text{UCL} &= \bar{p} + 3\sqrt{\frac{\bar{p}(1-\bar{p})}{n}} \\
 &= 0,109 + 3\sqrt{\frac{0,109(1-0,109)}{50}} \\
 &= 0,2412
 \end{aligned}$$

$$\begin{aligned}
 LCL &= \bar{p} - 3\sqrt{\frac{\bar{p}(1-\bar{p})}{n}} \\
 &= 0,109 - 3\sqrt{\frac{0,109(1-0,109)}{50}} \\
 &= -0,0232
 \end{aligned}$$

Based on the calculation results in table 4, a P control chart graph was obtained using Minitab software. The control chart graph P is presented in Figure 2 :

Figure 2. P Control Chart Graph



Source : Control P Chart from Minitab Processing, 2022

The results of the graph show that the defect data for the production of round stainless steel trash bins is still within the control limits, so there is no out of control data. Next, the DPMO calculation is carried out to determine the sigma level of the production process for round trash bins made from stainless steel (Setiawan et al., 2021). Based on production data from September to November 2022, data on total units produced, total defects and types of defects were obtained as follows:

Total units produced = 1725

Total defects = 188

Types of defects = 4

$$\begin{aligned}
 DPO &= (\text{Total Unit of Defect}) / (\text{Total unit} \times \text{CTQ Opportunity}) \\
 &= 188 / (1725 \times 4) \\
 &= 0,0273
 \end{aligned}$$

$$DPMO = 0,0273 \times 1.000.000 = 27.300$$

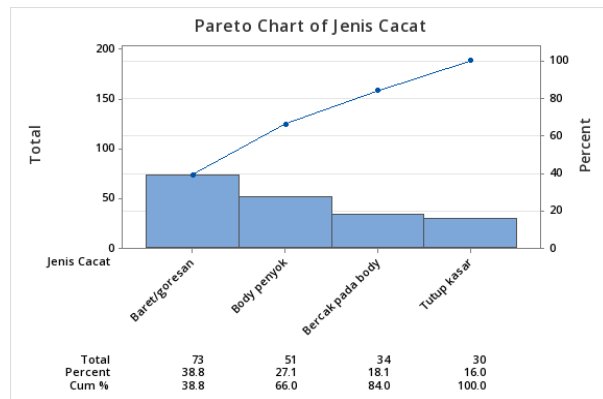
$$\text{Sigma Level} = \text{normsinv}((1000000 - DPMO) / 1000000) + 1.5 = 3,422$$

Based on the calculation results above, a DPMO value of 27300 is obtained, where these results indicate that there are 27300 opportunities for defects out of 1,000,000 opportunities in the process of stainless steel round trash bin products. With this DPMO value, a sigma level of 3.422 is obtained.

Analyze

The tools used at the analyze stage are Pareto diagrams, fishbone diagrams, and Failure Mode Effect Analysis (FMEA)(Patyal et al., 2021). The Pareto diagram is used to obtain values for the types of defects based on largest to smallest (Wulandari et al., 2022). The following are the results of the Pareto diagram obtained using the Minitab software :

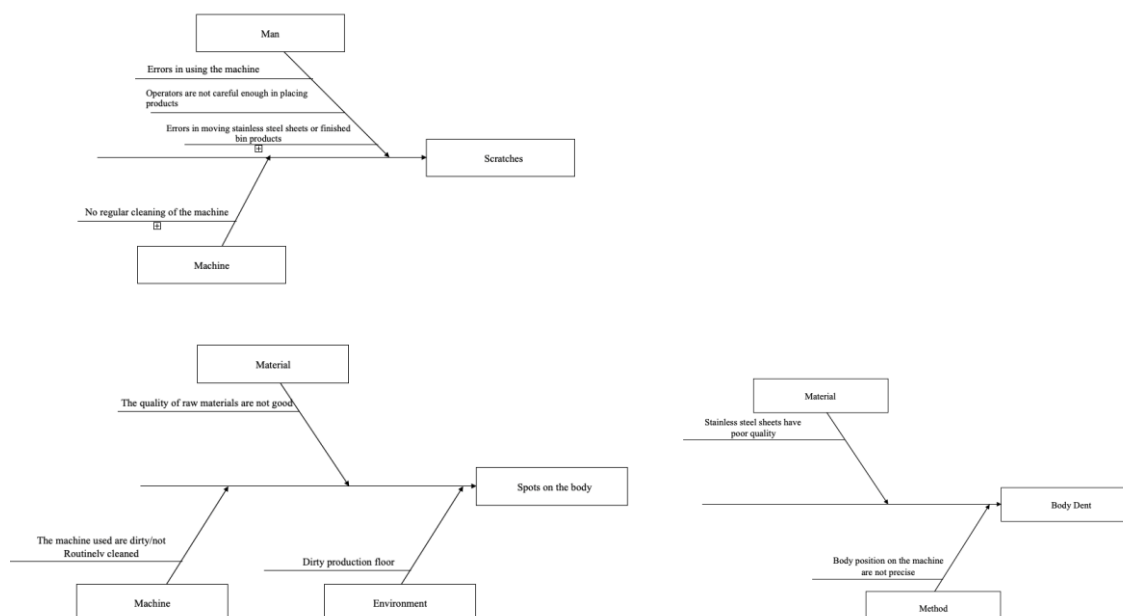
Figure 3. Pareto Diagram



Source : Pareto Chart from Minitab Processing, 2022

It was found that scratches had the largest total, followed by body dents, spots on the body, and rough lid. At the analyze stage there is a fishbone diagram that will be used to determine the causes of existing problems based on the categories that are Men, Method, Machine, Materials, and Environment (Hisprastin & Musfiroh, 2020)

Figure 4. Fishbone Diagram



Source : Observations and Interview Results on Defects, 2022

After obtaining the causes of defects through a fishbone diagram, further analysis is carried out using failure mode effect analysis (FMEA) to define the product process,

collect data on problems that may occur, assess problems in terms of impact, possibility and detection, calculate Risk Priority Number (RPN), as well as taking action to reduce risk (Lutfianto & Prabowo, 2022). The Risk Priority Number value is obtained from the product of each identified severity, occurrence and detection scale (Meykasari et al., 2022). Below are the FMEA results :

Table 5. Failure Mode Effect Analysis of trash bin stainless steel product

Process	Potential Failure	Cause of Failure	Effect of Failure	Severity	Occurrence	Current Control	Detection	RPN	Rank
Bending	Scratches	No regular cleaning of the machine	Reducing product quality and the product must be reworked	7	8	Routine maintenance of the machines used	5	280	1
		Errors in using the machine			6	Supervision of the production process carried out by the operator		210	4
		Operators are not careful enough in placing products			7		5	245	3
		Errors in moving stainless steel sheets or finished bin products			5	Operators are to be more careful in moving raw materials or products from one machine to the other	4	140	7
	Body Dent	Body position on the machine are not precise	Product is not suitable for use	7	6	Checking the body position by the operator before the bending process is carried out	5	210	4
		Stainless steel sheets have poor quality			6	Checking stainless steel sheets before use	6	252	2
Shearing	Spots on the body	Dirty production floor	Reducing product quality	5	8	Regular cleaning is carried out on the production floor	3	120	8
		The quality of raw materials are not good			6	Checking stainless steel sheets before use	6	180	6
		The machine used are dirty/not routinely cleaned			7	Routine maintenance of the machines used	3	105	9

Source : FMEA observation and Interview Analysis, 2022

Based on the FMEA results in table 5, the highest Risk Priority Number (RPN) value was obtained at 280 for the type of scratches defect in the cause of failure in the form of not carrying out regular cleaning of the machine.

DISCUSSION

Improve

At the Improve stage, changes will be made to improve process performance and solutions will be developed to problems so that improvements can be made (Batuta, 2023). In the previous stage that is FMEA, defects with the highest RPN were found in the form of scratches. Therefore, scratches will be prioritized to provide recommendations for improvement using the fuzzy analytical hierarchy process (Fuzzy AHP). Proposed improvements or recommendations for types of scratches are presented in table 6.

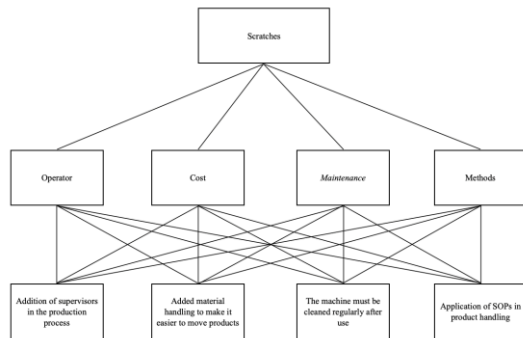
Table 6. Improvement recommendations

Type of defect	Improvement recommendations
Scratches	Addition of supervisors in the production process
	Added material handling to make it easier to move products
	The machine must be cleaned regularly after use
	Application of SOPs in product handling

Source : Interview and Brainstorming Results, 2023

The initial stage in solving problems with Fuzzy AHP is creating a hierarchical structure. In the hierarchical structure, there are criteria in the form of operators, costs, maintenance, and methods. There are alternatives to these criteria.

Figure 5. Hierarchical Structure of scratches defect



Source : Improvement Recommendations, Microsoft Visio, 2023

The next stage of the Fuzzy AHP method is to determine priority weights based on the criteria that have previously been obtained. The weights are obtained from the results of preparing a pairwise comparison matrix with each AHP and TFN scales. The following is the Triangular Fuzzy Number Scale used.

Table 7. TFN Scale

AHP Scale	Description	Fuzzy Triangular Value
1	Equally important	(1,1,1)
3	A little more important	(1,3,5)
5	More important	(3,5,7)
7	Definite importance	(5,7,9)
9	Absolute importance	(7,9,9)

Source : Questionnaire results of 2 Experts, 2023

The next stage of the Fuzzy AHP method is to determine priority weights based on the criteria that have previously been obtained. The weights are obtained from the results of preparing a pairwise comparison matrix with each AHP and TFN scales. In this Fuzzy AHP calculation, 2 experts were used, namely the head of production and the production operator from PT XYZ.

Table 8. Pairwise Comparison Matrix of Expert 1

Expert 1				
Criteria	Operator	Cost	Maintenance	Methods
Operator	1			Equally important
Cost	A little more important	1		Equally important
Maintenance	More important	A little more important	1	A little more important
Methods				1

Source : Questionnaire results of 2 Experts, 2023

Table 8 showed the assessment results by expert 1 with the related criteria. Based on the result on table 8, the assessment will then be converted to numerical value according to the AHP scale. These results are presented in table 9.

Table 9. Numerical Pairwise Comparison Matrix of Expert 1

Expert 1				
Criteria	Operator	Cost	Maintenance	Methods
Operator	1	1/3	1/5	1
Cost	3	1	1/3	1
Maintenance	5	3	1	3
Methods	1	1	1/3	1

Source : Questionnaire results of 2 Experts, 2023

Consistency test for expert 1 was carried out next. The value of the consistency ratio (CR) obtained was 0.0431, this result states that the pairwise matrix between the criteria for expert 1 is consistent due to the CR value being <0.1. After the result obtained showed expert 1 to be consistent, calculations are carried out for expert 2.

Table 10. Pairwise Comparison Matrix of Expert 2

Expert 2				
Criteria	Operator	Cost	Maintenance	Methods
Operator	1	A little more important		
Cost		1		
Maintenance	More important	More important	1	More important
Methods	Equally important	A little more important		1

Source : Questionnaire results of 2 Experts, 2023

Based on the result obtained in table 10, the assessment will be converted to numerical value according to the AHP scale. These results are presented and can be seen in table 11.

Table 11. Numerical Pairwise Comparison Matrix of Expert 2

Expert 2				
Criteria	Operator	Cost	Maintenance	Methods
Operator	1	3	1/5	1
Cost	1/3	1	1/2	1/3
Maintenance	5	5	1	5
Methods	1	3	1/2	1

Source : Questionnaire results of 2 Experts, 2023

Consistency test calculation for expert 2 was carried out. The value of the consistency ratio (CR) obtained was 0.0577, this result states that the pairwise matrix between the criteria in expert 2 is consistent. The next step to be carried out was the combination of the pairwise comparison matrix by expert 1 and expert 2.

Table 12. Pairwise Comparison Combination Matrix of expert 1 and expert 2

Combination Matrix of Expert 1 and Expert 2				
Criteria	Operator	Cost	Maintenance	Methods
Operator	1	0.9999	0.2	1
Cost	0.9999	1	0.2582	0.5773
Maintenance	5	3.873	1	3.873
Methods	1	1.7321	0.2582	1
Total	7.9999	7.605	1.7164	6.4503

Source : Questionnaire results of 2 Experts, 2023

The consistency ratio (CS) obtained was 0.0172, this result states that the pairwise matrix between the criteria in the combination of expert 1 and expert 2 is consistent due to the CR value being <0.1 . After the CR result obtained showed that expert 1 and expert 2 are both consistent, a defuzzification process was carried out.

Table 13. Defuzzification Criteria of Expert 1 and Expert 2

Criteria	Importance Fuzzy Number			Norm. Fuzzy Number			Defuzzification	
	l	m	u	l	m	u	Weight	Normalization
Operator	0.5028	0.6687	0.9291	0.0717	0.1324	0.2811	0.1617	0.135
Cost	0.4288	0.6213	1.0659	0.0611	0.123	0.3225	0.1689	0.141
Maintenance	1.7321	2.9428	3.9563	0.2468	0.5827	1.1971	0.6755	0.5639
Methods	0.6412	0.8178	1.0659	0.0914	0.1619	0.3225	0.1919	0.1602
Total	3.3049	5.0506	7.0172	0.471	1	2.1232	1.198	1

Source : Questionnaire results of 2 Experts, 2023

The normalization results in defuzzification process will be used as the weights in determining the best alternative. After calculating the criteria and each existing alternative, the final result was obtained in the form of the weight of each alternative from the existing criteria. The weight result is presented and can be seen in table 14.

Table 14. Improvement Alternative Weight Results

Criteria	Criteria Weight	Alternative Weight				Repair Alternatives (Criteria Weight x Alternative Weight)			
		1	2	3	4	1	2	3	4
Operator	0.135	0.148	0.2422	0.4971	0.1128	0.02	0.0327	0.0671	0.0152
Cost	0.141	0.1098	0.122	0.4599	0.3084	0.0155	0.0172	0.0648	0.0435
Maintenance	0.5639	0.1739	0.2404	0.4629	0.1227	0.0981	0.1356	0.261	0.0692
Methods	0.1602	0.1587	0.1203	0.2453	0.4758	0.0254	0.0193	0.0393	0.0762
Total						0.159	0.2048	0.4322	0.2041
Rank						4	2	1	3

Source : Questionnaire results of 2 Experts, 2023

Based on the calculation results obtained in table 14, it was found that the repair alternative with the highest total weight was alternative 3 (the machine must be cleaned regularly after use) with a total of 0.4322, alternative 2 (Added material handling to make

it easier to move products) with a total of 0.2048. and alternative 4 (application of SOPs in product handling) with a total of 0.2041.

Control

In the next stage, namely Control, implementation is carried out based on the results of proposed improvements that have previously been determined using the Fuzzy Analytical Hierarchy Process (Fuzzy AHP). The Control stage is carried out to check whether there is a positive impact resulting from implementation of proposed improvements to the company (Smętkowska & Mrugalska, 2018). Based on the results on the discussions and outreach with the company regarding the proposed improvements that will be implemented, the selected improvement proposal is the establishment of a Standard Operating Procedure (SOP) for operators in handling products. The implementation carried out will be observed to ensure whether the improvement can provide results or changes in quality (Sajjad et al., 2021). The Sigma level obtained after implementation was an increase that was not too high, namely from 3.422 to 3.6061.

CONCLUSIONS

Based on data processing related to stainless steel round trash bin products at PT XYZ, the following conclusions were obtained:

1. Based on Critical To Quality (CTQ) identification, 4 types of defects were found, namely body dents, scratches, spots on the product body, and rough lid surfaces.
2. The DPMO value obtained from the production process of round stainless steel trash bins for the period of September – November 2022 was 27,300, so the sigma level obtained is 3.422.
3. The results of the Pareto diagram show that the dominant defects found on the product are scratches with a percentage of 38.8%, body dents with a percentage of 27.1%, and spots on the product body with a percentage of 18.1%. The results of the Failure Mode Effect Analysis (FMEA) were obtained, namely scratches caused by not carrying out regular cleaning on the machine, which had the highest RPN value of 280.
4. Based on the Fuzzy Analytical Hierarchy Process (Fuzzy AHP) assessment regarding 4 criteria in the form of operators, costs, maintenance and methods for the 4 alternatives given, the highest improvement alternative weight was obtained, namely alternative 3 (the machine must be cleaned regularly after use) with a total of 0.4322, alternative 2 (Added material handling to make it easier to move products) with a total of 0.2048, and alternative 4 (application of SOPs in product handling) with a total of 0.2041.
5. Implementation and observations were carried out on 18 April 2023 – 02 May 2023 with a total of 5 days of data obtained. There was an increase in the Sigma level obtained after implementation, but it was not significant enough, namely from 3.422 to 3.6061.

LIMITATION

In the process of implementing proposed improvements, there are several limitations, namely as follows:

1. The implementation time is limited due to public holidays so the production process stops, so the length of implementation time obtained is 5 working days.
2. Limited implementation time means that the increase in sigma level obtained is not yet significant
3. The proposed improvement of added material handling to make it easier to move products cannot yet be implemented due to limited implementation time and requires coordination regarding the costs incurred.

REFERENCES

- ANDRIANI, V., YANUAR, F., & ASDI, Y. (2021). Analisis Pengendalian Kualitas Pada Produksi Lampu TL Di Pt Philips Indonesia Dengan Peta Kendali U Dan Decision on Belief (Dob). *Jurnal Matematika UNAND*, 10(2), 194. <https://doi.org/10.25077/jmu.10.2.194-201.2021>
- Batuta, D. (2023). Improving the Quality of the Chocolate Production Process At Wahana Interfood Nusantara Company Using Dmaic Method. *Journal of Community Development in Asia*, 6(1), 34–45. <https://doi.org/10.32535/jcda.v6i1.1955>
- Doaly, C. O., Moengin, P., & Chandiawan, G. (2019). Pemilihan Multi-Kriteria Pemasok Department Store Menggunakan Metode Fuzzy Ahp Dan Topsis. *Jurnal Ilmiah Teknik Industri*, 7(1), 70–78. <https://doi.org/10.24912/jitiuntar.v7i1.5037>
- Hernadewita, H., Ismail, M., Nurdin, M., & Kusumah, L. (2019). Improvement of magazine production quality using Six Sigma method : case study of a PT.XYZ. *Journal of Applied Research on Industrial Engineering*, 6(1), 71–79. <https://doi.org/10.22105/JARIE.2019.159327.1066>
- Hisprastin, Y., & Musfiroh, I. (2020). Ishikawa Diagram dan Failure Mode Effect Analysis (FMEA) sebagai Metode yang Sering Digunakan dalam Manajemen Risiko Mutu di Industri. *Majalah Farmasetika*, 6(1), 1. <https://doi.org/10.24198/mfarmasetika.v6i1.27106>
- Khoiriah, I. A. N., Sari, N. P., & Muryeti, M. (2020). Penerapan Metode Fuzzy Analytical Hierarchy Process (F-AHP) Dalam Menentukan Prioritas Kriteria Utama Evaluasi Pemasok Biji Plastik (Studi Kasus PT X). *Journal Printing and Packaging* ..., 1, 69–80. <https://jurnal.pnj.ac.id/index.php/ppt/article/view/1553%0Ahttps://jurnal.pnj.ac.id/index.php/ppt/article/download/1553/1784>
- Kurniawan, S., W. Yunitasari, E., & Nurhayati, E. (2022). Identifikasi Produk Cacat Briket Tempurung Kelapa menggunakan Six Sigma dan Fuzzy Analytical

- Hierarchy Process (FAHP). *Jurnal Ilmu Pengetahuan Dan Teknologi*, 8(1), 1–14.
- Lutfianto, M. A., & Prabowo, R. (2022). Implementation of Six Sigma Methods with Failure Mode and Effect Analysis (FMEA) as a Tool for Quality Improvement of Newspaper Products (Case Study: PT. ABC Manufacturing – Sidoarjo, East Java – Indonesia). *Journal of Integrated System*, 5(1), 87–98. <https://doi.org/10.28932/jis.v5i1.4615>
- Meykasari, A., Tyroni Mursityo, Y., & Yudi Setiawan, N. (2022). Evaluasi dan Perbaikan Proses Bisnis Menggunakan Failure Mode and Effect Analysis dan Six Sigma. *Jurnal Sistem Informasi, Teknologi Informasi, Dan Edukasi Sistem Informasi*, 3(1), 45–56. <https://doi.org/10.25126/justsi.v3i1.57>
- Montgomery, Douglas. C. (2013). *Introduction to Statistical Quality Control, Seventh Edition*. John Wiley & Sons, Inc.
- Patyal, V. S., Modgil, S., & Koilakuntla, M. (2021). Application of Six Sigma methodology in an Indian chemical company. *International Journal of Productivity and Performance Management*, 70(2), 350–375. <https://doi.org/10.1108/IJPPM-03-2019-0128>
- Primahesa, I. G., & Ngatilah, Y. (2022). *QUALITY ANALYSIS OF BAKERY PRODUCTS USING THE SIX SIGMA METHOD AND FAILURE MODE AND EFFECT ANALYSIS*. 1(2), 59–72.
- Sajjad, M. H., Naeem, K., Zubair, M., Usman Jan, Q. M., Khattak, S. B., Omair, M., & Nawaz, R. (2021). Waste reduction of polypropylene bag manufacturing process using Six Sigma DMAIC approach: A case study. *Cogent Engineering*, 8(1). <https://doi.org/10.1080/23311916.2021.1896419>
- Septiani, W., SD, T., & H, E. F. (2021). *Analisis Keputusan: Teori dan Implementasi*. Nas Media Pustaka.
- Setiawan, B., Rimawan, E., & Santoso Saroso, D. (2021). Quality Improvement Using The DMAIC Method To Reduce Defect Product In The PVC Compounds Industry. *Volatiles & Essent. Oils*, 8(4), 5388–5405.
- Singh, H., & Lal, Er. H. (2016). Application of DMAIC Technique in a Manufacturing Industry for Improving Process Performance - A Case Study. *International Journal on Emerging Technologies*, 7(2), 36–38.
- Smętkowska, M., & Mrugalska, B. (2018). Using Six Sigma DMAIC to Improve the Quality of the Production Process: A Case Study. *Procedia - Social and Behavioral Sciences*, 238, 590–596. <https://doi.org/10.1016/j.sbspro.2018.04.039>

- Subana, M., Sahrupi, S., & Supriyadi, S. (2021). Analisis Pengendalian Kualitas Produk Coil dengan Pendekatan Metode Six Sigma. *JiTEKH*, 9(1), 46–51. <https://doi.org/10.35447/jitekh.v9i1.333>
- Wulandari, R. S., Hakim, L., Haris, R. F., Nahdlatul, U., & Sidoarjo, U. (2022). *Analysis of Product Defects in the Packing Production Process at PT . XYZ Using FTA and FMEA Methods*. 9(1), 52–60.
- Yadav, N., Mathiyazhagan, K., & Kumar, K. (2019). Application of Six Sigma to minimize the defects in glass manufacturing industry: A case study. *Journal of Advances in Management Research*, 16(4), 594–624. <https://doi.org/10.1108/JAMR-11-2018-0102>

Wawan Kurniawan FTI

Product Quality Improvement Of Stainless

 TEKNIK INDUSTRI

Document Details

Submission ID

trn:oid:::3618:127230359

Submission Date

Jan 31, 2026, 9:04 AM GMT+7

Download Date

Jan 31, 2026, 9:24 AM GMT+7

File Name

Product Quality Improvement Of Stainless.pdf

File Size

556.6 KB

16 Pages

5,894 Words

29,207 Characters

15% Overall Similarity

The combined total of all matches, including overlapping sources, for each database.





Filtered from the Report

- Bibliography
- Quoted Text
- Small Matches (less than 10 words)




Exclusions

- 10 Excluded Sources

Match Groups

-  **37 Not Cited or Quoted 13%**
Matches with neither in-text citation nor quotation marks
-  **9 Missing Quotations 2%**
Matches that are still very similar to source material
-  **0 Missing Citation 0%**
Matches that have quotation marks, but no in-text citation
-  **0 Cited and Quoted 0%**
Matches with in-text citation present, but no quotation marks

Top Sources

- 6%  Internet sources
- 4%  Publications
- 11%  Submitted works (Student Papers)

Integrity Flags

0 Integrity Flags for Review

Our system's algorithms look deeply at a document for any inconsistencies that would set it apart from a normal submission. If we notice something strange, we flag it for you to review.

A Flag is not necessarily an indicator of a problem. However, we'd recommend you focus your attention there for further review.

Match Groups

- 37 Not Cited or Quoted 13%**
Matches with neither in-text citation nor quotation marks
- 9 Missing Quotations 2%**
Matches that are still very similar to source material
- 0 Missing Citation 0%**
Matches that have quotation marks, but no in-text citation
- 0 Cited and Quoted 0%**
Matches with in-text citation present, but no quotation marks

Top Sources

- 6% Internet sources**
- 4% Publications**
- 11% Submitted works (Student Papers)**

Top Sources

The sources with the highest number of matches within the submission. Overlapping sources will not be displayed.

1	Student papers	Syntax Corporation on 2023-10-16	2%
2	Student papers	School of Business and Management ITB on 2025-12-03	2%
3	Internet	www.coursehero.com	1%
4	Internet	repository.trisakti.ac.id	1%
5	Student papers	University of Huddersfield on 2024-05-22	1%
6	Publication	Narottam Yadav, Kaliyan Mathiyazhagan, Krishna Kumar. "Application of Six Sig...	<1%
7	Student papers	President University on 2021-04-09	<1%
8	Internet	garuda.kemdikbud.go.id	<1%
9	Internet	hydro.tabrizu.ac.ir	<1%
10	Internet	pdfs.semanticscholar.org	<1%

11	Internet	proceedings.sgu.ac.id	<1%
12	Student papers	IIT Delhi on 2015-03-27	<1%
13	Internet	nveo.org	<1%
14	Internet	www.mdpi.com	<1%
15	Student papers	Monash University on 2021-10-14	<1%
16	Student papers	Hamdan Bin Mohammed Smart University on 2021-11-11	<1%
17	Internet	jurnal.pnj.ac.id	<1%
18	Publication	Dian Pratiwi, Ahmad Zuhdi, Ratna Shofiati, Reymartin Reza Pratama, Hafiz Adi Wij...	<1%
19	Internet	ijsrm.in	<1%
20	Internet	repository.ubaya.ac.id	<1%
21	Student papers	Istanbul Kultur University on 2025-02-25	<1%
22	Internet	teachntest.org	<1%
23	Publication	Ari Kusuma Wardana, Rianto. "The Best Selection of PIP Scholarship: AHP-TOPSIS...	<1%
24	Student papers	Higher Education Commission Pakistan on 2022-08-30	<1%

25	Student papers	Institut Pertanian Bogor on 2024-03-14	<1%
26	Publication	Mohammad Septian Erwansyah, Enny Aryanny. "Quality Control of Furniture Pro...	<1%
27	Publication	Wang, T.C.. "Applying fuzzy linguistic preference relations to the improvement of ...	<1%
28	Internet	www.moseslsinggih.org	<1%



Product Quality Improvement Of Stainless Steel Round Trash Bin With Six Sigma And Fuzzy Analytical Hierarchy Process Method At PTXYZ

Radinka Deena Zubaira¹⁾; Wawan Kurniawan²⁾; Ratna Mira Yojana³⁾

^{1,2,3)} Study Program of Industrial Engineering, Universitas Trisakti

Email: ¹⁾ radinka063001900008@std.trisakti.ac.id; ²⁾ wawan.kurniawan@trisakti.ac.id; ³⁾ ratna.mira@trisakti.ac.id

No Hp/ WhatsApp: 08111621266

How to Cite :

Zubaira, R.D., Kurniawan, W., Yojana, R.M. (2023). Product Quality Improvement Of Stainless Steel Round Trash Bin With Six Sigma And Fuzzy Analytical Hierarchy Process Method At PT.XYZ. EKOMBIS REVIEW: Jurnal Ilmiah Ekonomi Dan Bisnis, 12(1). doi: <https://doi.org/10.37676/ekombis.v12i1>

ARTICLE HISTORY

Received [03 Juli 2023]

Revised [10 November 2023]

Accepted [02 December 2023]

KEYWORDS

Six Sigma, DMAIC, Critical To Quality (CTQ), Defects Per Million Opportunities (DPMO) Failure Mode Effect Analysis (FMEA), Fuzzy Analytical Hierarchy Process.

This is an open access article under the [CC-BY-SA](#) license



ABSTRACT

PT. XYZ is a manufacturing industry that produces various cleaning equipment. One of the products that has a high level of defects are trash bins made of stainless steel. The purpose of this research is to improve the quality of stainless steel waste products. The method used is Six Sigma and Fuzzy Analytical Hierarchy Process. In the Define stage, the types of defects found were body dents, scratches, spots, and rough lids. In the Measure stage, the initial DPMO value obtained is 3.422. In the Analyze stage, the results of the analysis process are defects with the highest Risk Priority Number of 280. The next stage is Improve, where defects with the highest RPN value are prioritized for proposed improvements using Fuzzy AHP. Based on the results of the Fuzzy AHP assessment, it was found that the highest weight was alternative 3, namely the machine must be cleaned regularly after being used at 0.4322, alternative 2, namely the addition of material handling to facilitate product transfer of 0.2048, and alternative 4, namely the establishment of SOPs for product handling. of 0.2041. After the Improve stage, the final stage in the form of Control is carried out to see whether the implementation of the proposed improvements has a positive impact on the company. The DPMO results obtained after implementation were 3.6061.

INTRODUCTION

PT. XYZ is a manufacturing industry that produces cleaning equipment. PT. XYZ was founded in 2010 and has been present providing superior products to consumers and establishing cooperative relationships with national scale business partners in Indonesia. In this research, it is conducted on the production process of stainless steel trash bin from PT. XYZ because it is a product with the highest defect value and exceeds the company's tolerance limits. The company's defect tolerance limit is 5%. The historical data on the production results of stainless steel round trash bin used is data for the period January to June 2022 (Table 1). The highest percentage of defects seen in Table 1 was in February

at 10.86%. Apart from that, in March, May and June, the number of defects obtained still exceeded the company's tolerance limits.

Table 1. Historical Data on Production of Round Stainless Trash

Period	Round Stainless Trash Bin		
	Production Quantity	NG Product	Defect Percentage
January	550	23	4,18%
February	700	76	10,86%
March	300	17	5,67%
April	450	19	4,22%
May	600	44	7,33%
June	650	63	9,69%

Source : Primary Data of PT XYZ, 2022

The company has implemented a quality control process by carrying out regular inspections of the production process and checking raw materials before use to ensure that the final product has no defects. However, defective products were found in the company hence the quality improvements are needed. Improvements to the quality of this stainless steel round trash bin product refer to the quality dimensions in the form of durability, aesthetics, and conformance to standards. These three quality dimensions become a reference for good product quality to be accepted by costumers of round stainless steel trash bin at PT. XYZ. The method used in this research to improve the quality of stainless steel trash bin products are the Six Sigma and Fuzzy AHP methods. Using the six sigma method can help understand and identify the causes of problems to improve product quality. The use of the six sigma method focuses on reducing variance to minimize the opportunity for defects to occur (Subana et al., 2021). Then the Fuzzy AHP method is used which is an improve level of AHP, because the AHP method as shortcomings in the form of a lack of ability to overcome uncertainty and vague decisions in decision making (Doaly et al., 2019). Therefore, by using the fuzzy AHP method, aspects of uncertainty and vague decisions can be handled well so that the resulting decisions are more accurate and in line with the company's needs.

LITERATURE REVIEW

Six Sigma

The Six Sigma method is a method or way to achieve operational performance, only finding 3.4 defects in every one million activities or opportunities. Six Sigma is driven by an understanding of facts, data, and statistical analysis. Six Sigma also provides benefits including cost reduction, increased productivity, market share growth, defect reduction, and production or service development. In its application, Six Sigma has five steps to improve performance, namely Define, Measure, Analyze, Improve and Control, which is then abbreviated as DMAIC, so that problems or opportunities, processes and customer needs must be verified and updated at each step(Hernadewita et al., 2019).

Six Sigma creates a reliable process that eliminates waste, reduces variation and improves process flow. Internal changes that can occur using the Six Sigma method include organizational culture, perception of methodology, reduction of losses, and

transfer of knowledge from projects to company knowledge. External changes, namely benchmarking with Six Sigma organizations, market competition, and customer satisfaction (Yadav et al., 2019). DMAIC is a structured problem solving procedure and is widely used in quality and process improvement. DMAIC is often associated with Six Sigma activities and almost all Six Sigma implementations use the DMAIC process for project management and completion. However, DMAIC does not have to be formally related to Six Sigma, and can be used independently of organizational use of Six Sigma (Montgomery, 2013).

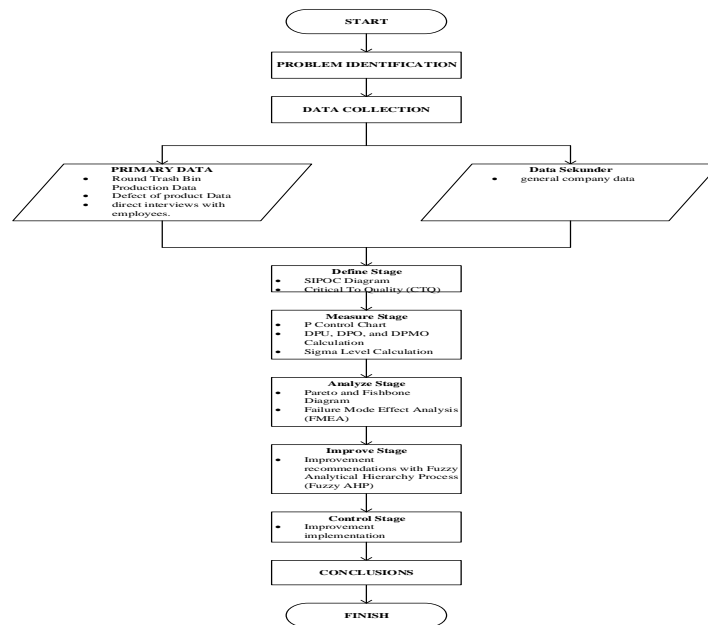
Fuzzy Analytical Hierarchy Process (Fuzzy-AHP)

Fuzzy-AHP is a development methodology for AHP. The Fuzzy-AHP method is basically the same as the AHP method, but the Fuzzy-AHP method sets the AHP scale into a fuzzy triangular scale for priority access (Septiani et al., 2021). Analytical Hierarchy Process (AHP) is a decision-making methodology developed in 1980 by Saaty. AHP is used to simplify the decision-making process by using quantitative and qualitative techniques to decompose complex problems into several sub-problems. The Fuzzy method is used in AHP to cover AHP errors such as problems with criteria that have a more subjective nature (Khoiriah et al., 2020)

METHODS

The method that will be used in this research is DMAIC in Six Sigma. In the initial stage, the Define process is carried out to define the problems that occur. Next, the Measure process is carried out for data measurement. Then proceed with the Analyze process to analyze the data to identify the root of the existing problem. At the analyze stage, the Failure Mode Effect Analysis (FMEA) method is used to define the product process, collect data on problems that may occur, assess problems in terms of impact, probability and detection, calculate the Risk Priority Number (RPN), and take action to reduce risk (Lutfianto & Prabowo, 2022). The results of FMEA are dominant problems which are corrected subject at the next stage. At the Improve stage, the results from the previous stages need to be followed up with proposals for improvement. Decision making in the Improve stage is carried out using the Fuzzy Analytical Hierarchy Process (Fuzzy AHP) method. The Fuzzy AHP method in six sigma is used to select the best alternative. The creation of the hierarchical structure contained in the initial step of Fuzzy AHP is based on the FMEA results at the Six Sigma stage obtained in the Analyze step (Kurniawan et al., 2022)

Figure 1. Methods *Flowchart*



Source : Data Processing, Microsoft Visio, 2022

RESULTS

Define

At the Define stage, the SIPOC (Supplier-Input-Process-Output-Customer) diagram is used, which is a diagram to map all processes and elements involved in the product manufacturing process (Montgomery, 2013). Defects can be defined as any deviation in performance from Critical To Quality (CTQ) (Singh & Lal, 2016)

Table 2. SIPOC Diagram





Supplier	Input	Process	Output	Customer
Raw Material Warehouse	Stainless Steel Sheet	Transfer of Raw Materials	Stainless Steel Sheet	Shearing Machine
Shearing Machine	Stainless Steel Sheet	Raw Material Measurement	Stainless Steel Sheet with sizes according to cutting	Shearing Machine
Shearing Machine	Stainless Steel Sheet with sizes according to cutting	Raw Material Cutting	Trash Bin Body, Trash Bin Lid, Trash Bin Base	Pond Machine
Pond Machine	Trash Bin Lid, Trash Bin Base	Base and Lid shape printing	Trash Bin Lid, Trash Bin Base	Stamping Press Machine, Assembly Area
Pond Machine	Trash Bin Body	Punching on the body side	Trash Bin Body	Plate Roll Machine
Stamping Press Machine	Trash Bin Lid, Trash Bin Base	Pressing Process	Trash Bin Lid, Trash Bin Base	Argon Welding Machine
Plate Roll Machine	Trash Bin Body	Bending Process	Trash Bin Body	Argon Welding Machine
Argon Welding Machine	Trash Bin Body, Trash Bin Base	Joining and Welding	Trash Bin	Assembly Area
Assembly Area	Trash Bin, Trash Bin Lid	Assembly	Trash Bin	Assembly Area
Assembly Area	Trash Bin	Finished Product Inspection	Trash Bin	Assembly Area
Packaging Area	Trash Bin	Product Packaging	Trash Bin	Finished Goods Warehouse

Source : Observation and interview results, 2022

3

The supplier describes the initial material or goods that will be worked on in the production process, the input is the material that is available and will be used, the process is the work steps, the output is the product produced in the process, and the customer is the next step that will be carried out. After identifying the SIPOC Diagram, the next step is identifying Critical To Quality (CTQ) or the main characteristics that will influence customer satisfaction (Primahesa & Ngatilah, 2022)

Table 3. Critical To Quality (CTQ)

No	Type of Defect	Image of Defect	Defect Description
1	Body Dent		The surface of the trash bin body is dented, reducing the appearance and durability of the trash bin
2	Scratches		Scratches on the body, lid and base of the trash bin make the product quality less good and the appearance less attractive
3	Spots on the body		Spots that make the body dirty are caused by the production floor in the packaging area being less than clean
4	Rough lid		The surface of the lid is rough so it cannot be used or is dangerous for customers, caused by a lack of pressure during the pressing process

Source : Observation and interview results, 2022

In Table 3 Critical To Quality (CTQ), 4 types of defects were obtained based on direct observations and interviews with production section operators. The types of defects found in round trash bin products made from stainless steel are attributes.

Measure

14

At the measure stage, the P control chart is used to determine whether defects in the product are within the control limits or not. The following are the calculation results for the P control chart graph:

Table 4. P Control Chart Calculation

No	Observation Date	Total Product (Units/day)	Defect Total	Defect Percentage	CL	UCL	LCL
1	01/09/22	50	6	0.12	0.109	0.2412	0
2	05/09/22	75	12	0.16	0.109	0.217	0.001
3	07/09/22	100	11	0.11	0.109	0.2025	0.0155

1

No	Observation Date	Total Product (Units/day)	Defect Total	Defect Percentage	CL	UCL	LCL
4	13/09/22	80	4	0.05	0.109	0.2135	0.0045
5	15/09/22	30	5	0.1667	0.109	0.2797	0
6	19/09/22	25	4	0.16	0.109	0.296	0
7	20/09/22	65	10	0.1538	0.109	0.225	0
8	23/09/22	75	8	0.1067	0.109	0.217	0.001
9	26/09/22	25	2	0.08	0.109	0.296	0
10	27/09/22	70	9	0.1286	0.109	0.2207	0
11	28/09/22	40	4	0.1	0.109	0.2568	0
12	29/09/22	35	1	0.0286	0.109	0.267	0
13	03/10/22	75	8	0.1067	0.109	0.217	0.001
14	07/10/22	50	7	0.14	0.109	0.2412	0
15	12/10/22	40	4	0.1	0.109	0.2568	0
16	14/10/22	70	3	0.0429	0.109	0.2207	0
17	19/10/22	95	6	0.0632	0.109	0.2049	0.0131
18	21/10/22	40	2	0.05	0.109	0.2568	0
19	25/10/22	50	7	0.14	0.109	0.2412	0
20	26/10/22	30	7	0.2333	0.109	0.2797	0
21	27/10/22	25	5	0.2	0.109	0.296	0
22	07/11/22	50	4	0.08	0.109	0.2412	0
23	08/11/22	30	5	0.1667	0.109	0.2797	0
24	11/11/22	100	12	0.12	0.109	0.2025	0.0155
25	14/11/22	75	7	0.0933	0.109	0.217	0.001
26	16/11/22	50	4	0.08	0.109	0.2412	0
27	22/11/22	90	9	0.1	0.109	0.2075	0.0105
28	25/11/22	100	8	0.08	0.109	0.2025	0.0155
29	29/11/22	40	5	0.125	0.109	0.2568	0
30	30/11/22	45	9	0.2	0.109	0.2484	0
Total		1725	188				

Source : Processed Data from Observation, 2022

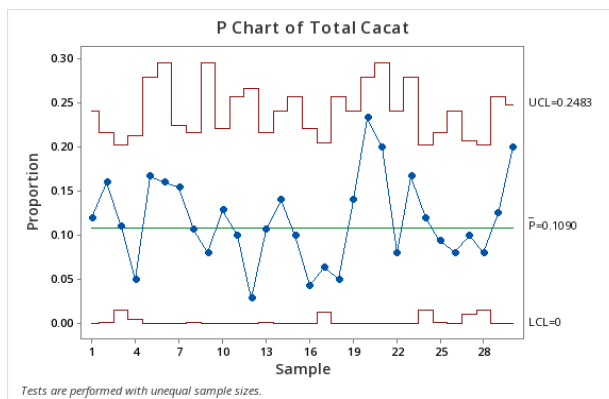
In table 4, first the results of the center line calculation are obtained, namely the division of total defects by the total production quantity. Next, the upper control limit and lower control limit are calculated to determine the highest and lowest limits of the defect data (ANDRIANI et al., 2021). The following is one of the UCL and LCL calculations for the observation date 01/09/2022:

$$\begin{aligned}
 \text{UCL} &= \bar{p} + 3\sqrt{\frac{\bar{p}(1-\bar{p})}{n}} \\
 &= 0,109 + 3\sqrt{\frac{0,109(1-0,109)}{50}} \\
 &= 0,2412
 \end{aligned}$$

$$\begin{aligned}
 LCL &= \bar{p} - 3\sqrt{\frac{\bar{p}(1-\bar{p})}{n}} \\
 &= 0,109 - 3\sqrt{\frac{0,109(1-0,109)}{50}} \\
 &= -0,0232
 \end{aligned}$$

Based on the calculation results in table 4, a P control chart graph was obtained using Minitab software. The control chart graph P is presented in Figure 2 :

Figure 2. P Control Chart Graph



Source : Control P Chart from Minitab Processing, 2022

The results of the graph show that the defect data for the production of round stainless steel trash bins is still within the control limits, so there is no out of control data. Next, the DPMO calculation is carried out to determine the sigma level of the production process for round trash bins made from stainless steel (Setiawan et al., 2021). Based on production data from September to November 2022, data on total units produced, total defects and types of defects were obtained as follows:

Total units produced = 1725

Total defects = 188

Types of defects = 4

$$\begin{aligned}
 DPO &= (\text{Total Unit of Defect}) / (\text{Total unit} \times \text{CTQ Opportunity}) \\
 &= 188 / (1725 \times 4) \\
 &= 0,0273
 \end{aligned}$$

$$DPMO = 0,0273 \times 1.000.000 = 27.300$$

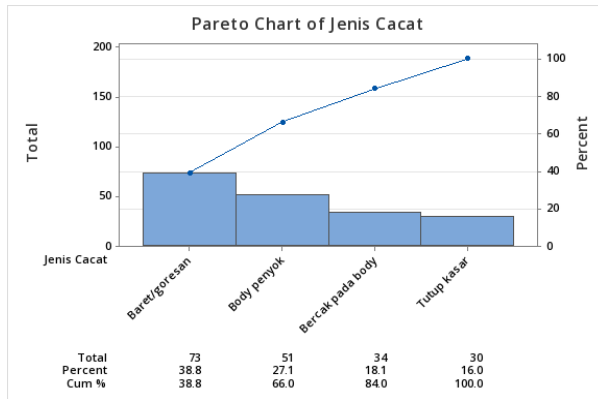
$$\text{Sigma Level} = \text{normsinv}((1000000 - DPMO) / 1000000) + 1.5 = 3,422$$

Based on the calculation results above, a DPMO value of 27300 is obtained, where these results indicate that there are 27300 opportunities for defects out of 1,000,000 opportunities in the process of stainless steel round trash bin products. With this DPMO value, a sigma level of 3.422 is obtained.

Analyze

The tools used at the analyze stage are Pareto diagrams, fishbone diagrams, and Failure Mode Effect Analysis (FMEA)(Patyal et al., 2021). The Pareto diagram is used to obtain values for the types of defects based on largest to smallest (Wulandari et al., 2022). The following are the results of the Pareto diagram obtained using the Minitab software :

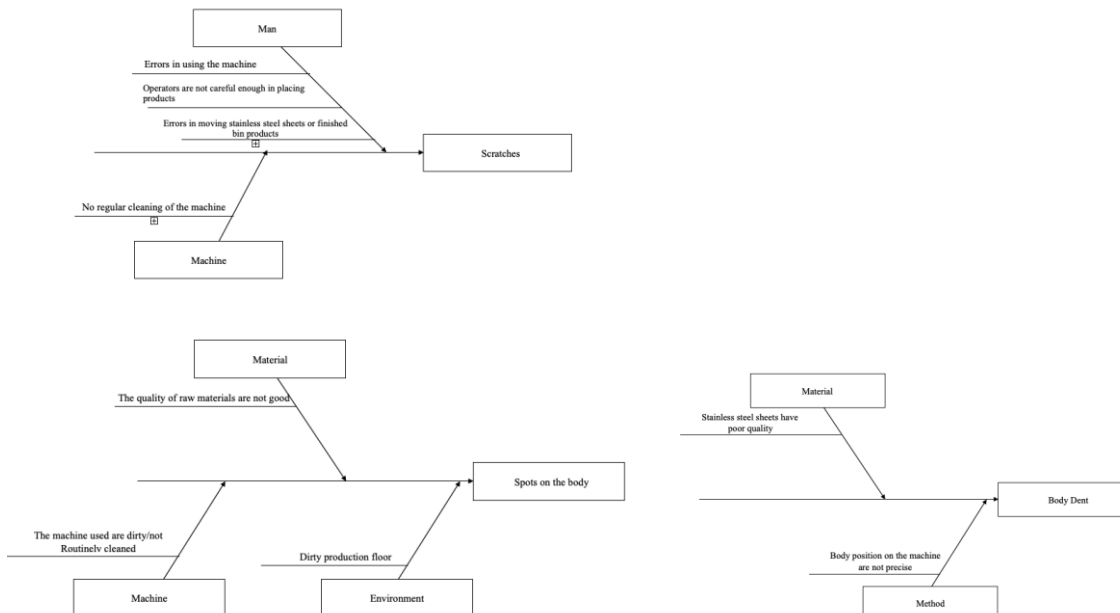
Figure 3. Pareto Diagram



Source : Pareto Chart from Minitab Processing, 2022

It was found that scratches had the largest total, followed by body dents, spots on the body, and rough lid. At the analyze stage there is a fishbone diagram that will be used to determine the causes of existing problems based on the categories that are Men, Method, Machine, Materials, and Environment (Hisprastin & Musfiroh, 2020)

Figure 4. Fishbone Diagram



Source : Observations and Interview Results on Defects, 2022

After obtaining the causes of defects through a fishbone diagram, further analysis is carried out using failure mode effect analysis (FMEA) to define the product process,

collect data on problems that may occur, assess problems in terms of impact, possibility and detection, calculate Risk Priority Number (RPN), as well as taking action to reduce risk (Lutfianto & Prabowo, 2022). The Risk Priority Number value is obtained from the product of each identified severity, occurrence and detection scale (Meykasari et al., 2022). Below are the FMEA results :

Table 5. Failure Mode Effect Analysis of trash bin stainless steel product

Process	Potential Failure	Cause of Failure	Effect of Failure	Severity	Occurrence	Current Control	Detection	RPN	Rank
Bending	Scratches	No regular cleaning of the machine	Reducing product quality and the product must be reworked	7	8	Routine maintenance of the machines used	5	280	1
		Errors in using the machine			6	Supervision of the production process carried out by the operator		210	4
		Operators are not careful enough in placing products			7		5	245	3
		Errors in moving stainless steel sheets or finished bin products			5	Operators are to be more careful in moving raw materials or products from one machine to the other	4	140	7
	Body Dent	Body position on the machine are not precise	Product is not suitable for use	7	6	Checking the body position by the operator before the bending process is carried out	5	210	4
		Stainless steel sheets have poor quality			6	Checking stainless steel sheets before use	6	252	2
Shearing	Spots on the body	Dirty production floor	Reducing product quality	5	8	Regular cleaning is carried out on the production floor	3	120	8
		The quality of raw materials are not good			6	Checking stainless steel sheets before use	6	180	6
		The machine used are dirty/not routinely cleaned			7	Routine maintenance of the machines used	3	105	9

Source : FMEA observation and Interview Analysis, 2022

Based on the FMEA results in table 5, the highest Risk Priority Number (RPN) value was obtained at 280 for the type of scratches defect in the cause of failure in the form of not carrying out regular cleaning of the machine.

DISCUSSION

Improve

At the Improve stage, changes will be made to improve process performance and solutions will be developed to problems so that improvements can be made (Batuta, 2023). In the previous stage that is FMEA, defects with the highest RPN were found in the form of scratches. Therefore, scratches will be prioritized to provide recommendations for improvement using the fuzzy analytical hierarchy process (Fuzzy AHP). Proposed improvements or recommendations for types of scratches are presented in table 6.

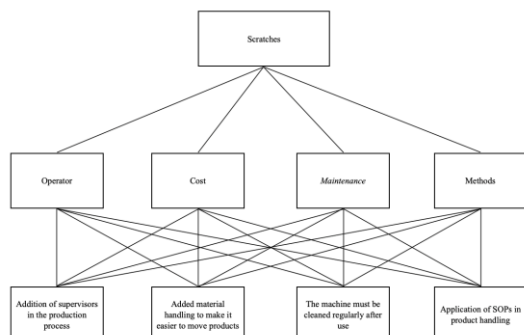
Table 6. Improvement recommendations

Type of defect	Improvement recommendations
Scratches	Addition of supervisors in the production process
	Added material handling to make it easier to move products
	The machine must be cleaned regularly after use
	Application of SOPs in product handling

Source : Interview and Brainstorming Results, 2023

The initial stage in solving problems with Fuzzy AHP is creating a hierarchical structure. In the hierarchical structure, there are criteria in the form of operators, costs, maintenance, and methods. There are alternatives to these criteria.

Figure 5. Hierarchical Structure of scratches defect



Source : Improvement Recommendations, Microsoft Visio, 2023

The next stage of the Fuzzy AHP method is to determine priority weights based on the criteria that have previously been obtained. The weights are obtained from the results of preparing a pairwise comparison matrix with each AHP and TFN scales. The following is the Triangular Fuzzy Number Scale used.

Table 7. TFN Scale

AHP Scale	Description	Fuzzy Triangular Value
1	Equally important	(1,1,1)
3	A little more important	(1,3,5)
5	More important	(3,5,7)
7	Definite importance	(5,7,9)
9	Absolute importance	(7,9,9)

Source : Questionnaire results of 2 Experts, 2023

The next stage of the Fuzzy AHP method is to determine priority weights based on the criteria that have previously been obtained. The weights are obtained from the results of preparing a pairwise comparison matrix with each AHP and TFN scales. In this Fuzzy AHP calculation, 2 experts were used, namely the head of production and the production operator from PT XYZ.

Table 8. Pairwise Comparison Matrix of Expert 1

Expert 1				
Criteria	Operator	Cost	Maintenance	Methods
Operator	1			Equally important
Cost	A little more important	1		Equally important
Maintenance	More important	A little more important	1	A little more important
Methods				1

Source : Questionnaire results of 2 Experts, 2023

Table 8 showed the assessment results by expert 1 with the related criteria. Based on the result on table 8, the assessment will then be converted to numerical value according to the AHP scale. These results are presented in table 9.

Table 9. Numerical Pairwise Comparison Matrix of Expert 1

Expert 1				
Criteria	Operator	Cost	Maintenance	Methods
Operator	1	1/3	1/5	1
Cost	3	1	1/3	1
Maintenance	5	3	1	3
Methods	1	1	1/3	1

Source : Questionnaire results of 2 Experts, 2023

Consistency test for expert 1 was carried out next. The value of the consistency ratio (CR) obtained was 0.0431, this result states that the pairwise matrix between the criteria for expert 1 is consistent due to the CR value being <0.1. After the result obtained showed expert 1 to be consistent, calculations are carried out for expert 2.

Table 10. Pairwise Comparison Matrix of Expert 2

Expert 2				
Criteria	Operator	Cost	Maintenance	Methods
Operator	1	A little more important		
Cost		1		
Maintenance	More important	More important	1	More important
Methods	Equally important	A little more important		1

Source : Questionnaire results of 2 Experts, 2023

Based on the result obtained in table 10, the assessment will be converted to numerical value according to the AHP scale. These results are presented and can be seen in table 11.

Table 11. Numerical Pairwise Comparison Matrix of Expert 2

Expert 2				
Criteria	Operator	Cost	Maintenance	Methods
Operator	1	3	1/5	1
Cost	1/3	1	1/2	1/3
Maintenance	5	5	1	5
Methods	1	3	1/2	1

Source : Questionnaire results of 2 Experts, 2023

Consistency test calculation for expert 2 was carried out. The value of the consistency ratio (CR) obtained was 0.0577, this result states that the pairwise matrix between the criteria in expert 2 is consistent. The next step to be carried out was the combination of the pairwise comparison matrix by expert 1 and expert 2.

Table 12. Pairwise Comparison Combination Matrix of expert 1 and expert 2

Combination Matrix of Expert 1 and Expert 2				
Criteria	Operator	Cost	Maintenance	Methods
Operator	1	0.9999	0.2	1
Cost	0.9999	1	0.2582	0.5773
Maintenance	5	3.873	1	3.873
Methods	1	1.7321	0.2582	1
Total	7.9999	7.605	1.7164	6.4503

Source : Questionnaire results of 2 Experts, 2023

The consistency ratio (CS) obtained was 0.0172, this result states that the pairwise matrix between the criteria in the combination of expert 1 and expert 2 is consistent due to the CR value being <0.1 . After the CR result obtained showed that expert 1 and expert 2 are both consistent, a defuzzification process was carried out.

Table 13. Defuzzification Criteria of Expert 1 and Expert 2

Criteria	Importance Fuzzy Number			Norm. Fuzzy Number			Defuzzification	
	l	m	u	l	m	u	Weight	Normalization
Operator	0.5028	0.6687	0.9291	0.0717	0.1324	0.2811	0.1617	0.135
Cost	0.4288	0.6213	1.0659	0.0611	0.123	0.3225	0.1689	0.141
Maintenance	1.7321	2.9428	3.9563	0.2468	0.5827	1.1971	0.6755	0.5639
Methods	0.6412	0.8178	1.0659	0.0914	0.1619	0.3225	0.1919	0.1602
Total	3.3049	5.0506	7.0172	0.471	1	2.1232	1.198	1

Source : Questionnaire results of 2 Experts, 2023

The normalization results in defuzzification process will be used as the weights in determining the best alternative. After calculating the criteria and each existing alternative, the final result was obtained in the form of the weight of each alternative from the existing criteria. The weight result is presented and can be seen in table 14.

Table 14. Improvement Alternative Weight Results

Criteria	Criteria Weight	Alternative Weight				Repair Alternatives (Criteria Weight x Alternative Weight)			
		1	2	3	4	1	2	3	4
Operator	0.135	0.148	0.2422	0.4971	0.1128	0.02	0.0327	0.0671	0.0152
Cost	0.141	0.1098	0.122	0.4599	0.3084	0.0155	0.0172	0.0648	0.0435
Maintenance	0.5639	0.1739	0.2404	0.4629	0.1227	0.0981	0.1356	0.261	0.0692
Methods	0.1602	0.1587	0.1203	0.2453	0.4758	0.0254	0.0193	0.0393	0.0762
Total						0.159	0.2048	0.4322	0.2041
Rank						4	2	1	3

Source : Questionnaire results of 2 Experts, 2023

Based on the calculation results obtained in table 14, it was found that the repair alternative with the highest total weight was alternative 3 (the machine must be cleaned regularly after use) with a total of 0.4322, alternative 2 (Added material handling to make

it easier to move products) with a total of 0.2048. and alternative 4 (application of SOPs in product handling) with a total of 0.2041.

Control

In the next stage, namely Control, implementation is carried out based on the results of proposed improvements that have previously been determined using the Fuzzy Analytical Hierarchy Process (Fuzzy AHP). The Control stage is carried out to check whether there is a positive impact resulting from implementation of proposed improvements to the company (Smętkowska & Mrugalska, 2018). Based on the results on the discussions and outreach with the company regarding the proposed improvements that will be implemented, the selected improvement proposal is the establishment of a Standard Operating Procedure (SOP) for operators in handling products. The implementation carried out will be observed to ensure whether the improvement can provide results or changes in quality (Sajjad et al., 2021). The Sigma level obtained after implementation was an increase that was not too high, namely from 3.422 to 3.6061.

CONCLUSIONS

Based on data processing related to stainless steel round trash bin products at PT XYZ, the following conclusions were obtained:

1. Based on Critical To Quality (CTQ) identification, 4 types of defects were found, namely body dents, scratches, spots on the product body, and rough lid surfaces.
2. The DPMO value obtained from the production process of round stainless steel trash bins for the period of September – November 2022 was 27,300, so the sigma level obtained is 3.422.
3. The results of the Pareto diagram show that the dominant defects found on the product are scratches with a percentage of 38.8%, body dents with a percentage of 27.1%, and spots on the product body with a percentage of 18.1%. The results of the Failure Mode Effect Analysis (FMEA) were obtained, namely scratches caused by not carrying out regular cleaning on the machine, which had the highest RPN value of 280.
4. Based on the Fuzzy Analytical Hierarchy Process (Fuzzy AHP) assessment regarding 4 criteria in the form of operators, costs, maintenance and methods for the 4 alternatives given, the highest improvement alternative weight was obtained, namely alternative 3 (the machine must be cleaned regularly after use) with a total of 0.4322, alternative 2 (Added material handling to make it easier to move products) with a total of 0.2048, and alternative 4 (application of SOPs in product handling) with a total of 0.2041.
5. Implementation and observations were carried out on 18 April 2023 – 02 May 2023 with a total of 5 days of data obtained. There was an increase in the Sigma level obtained after implementation, but it was not significant enough, namely from 3.422 to 3.6061.

LIMITATION

In the process of implementing proposed improvements, there are several limitations, namely as follows:

1. The implementation time is limited due to public holidays so the production process stops, so the length of implementation time obtained is 5 working days.
2. Limited implementation time means that the increase in sigma level obtained is not yet significant
3. The proposed improvement of added material handling to make it easier to move products cannot yet be implemented due to limited implementation time and requires coordination regarding the costs incurred.

REFERENCES

- ANDRIANI, V., YANUAR, F., & ASDI, Y. (2021). Analisis Pengendalian Kualitas Pada Produksi Lampu TL Di Pt Philips Indonesia Dengan Peta Kendali U Dan Decision on Belief (Dob). *Jurnal Matematika UNAND*, 10(2), 194. <https://doi.org/10.25077/jmu.10.2.194-201.2021>
- Batuta, D. (2023). Improving the Quality of the Chocolate Production Process At Wahana Interfood Nusantara Company Using Dmaic Method. *Journal of Community Development in Asia*, 6(1), 34–45. <https://doi.org/10.32535/jcda.v6i1.1955>
- Doaly, C. O., Moengin, P., & Chandiawan, G. (2019). Pemilihan Multi-Kriteria Pemasok Department Store Menggunakan Metode Fuzzy Ahp Dan Topsis. *Jurnal Ilmiah Teknik Industri*, 7(1), 70–78. <https://doi.org/10.24912/jitiuntar.v7i1.5037>
- Hernadewita, H., Ismail, M., Nurdin, M., & Kusumah, L. (2019). Improvement of magazine production quality using Six Sigma method : case study of a PT.XYZ. *Journal of Applied Research on Industrial Engineering*, 6(1), 71–79. <https://doi.org/10.22105/JARIE.2019.159327.1066>
- Hisprastin, Y., & Musfiroh, I. (2020). Ishikawa Diagram dan Failure Mode Effect Analysis (FMEA) sebagai Metode yang Sering Digunakan dalam Manajemen Risiko Mutu di Industri. *Majalah Farmasetika*, 6(1), 1. <https://doi.org/10.24198/mfarmasetika.v6i1.27106>
- Khoiriah, I. A. N., Sari, N. P., & Muryeti, M. (2020). Penerapan Metode Fuzzy Analytical Hierarchy Process (F-AHP) Dalam Menentukan Prioritas Kriteria Utama Evaluasi Pemasok Biji Plastik (Studi Kasus PT X). *Journal Printing and Packaging* ..., 1, 69–80. <https://jurnal.pnj.ac.id/index.php/ppt/article/view/1553%0Ahttps://jurnal.pnj.ac.id/index.php/ppt/article/download/1553/1784>
- Kurniawan, S., W. Yunitasari, E., & Nurhayati, E. (2022). Identifikasi Produk Cacat Briket Tempurung Kelapa menggunakan Six Sigma dan Fuzzy Analytical

Hierarchy Process (FAHP). *Jurnal Ilmu Pengetahuan Dan Teknologi*, 8(1), 1–14.

Lutfianto, M. A., & Prabowo, R. (2022). Implementation of Six Sigma Methods with Failure Mode and Effect Analysis (FMEA) as a Tool for Quality Improvement of Newspaper Products (Case Study: PT. ABC Manufacturing – Sidoarjo, East Java – Indonesia). *Journal of Integrated System*, 5(1), 87–98. <https://doi.org/10.28932/jis.v5i1.4615>

Meykasari, A., Tyroni Mursityo, Y., & Yudi Setiawan, N. (2022). Evaluasi dan Perbaikan Proses Bisnis Menggunakan Failure Mode and Effect Analysis dan Six Sigma. *Jurnal Sistem Informasi, Teknologi Informasi, Dan Edukasi Sistem Informasi*, 3(1), 45–56. <https://doi.org/10.25126/justsi.v3i1.57>

Montgomery, Douglas. C. (2013). *Introduction to Statistical Quality Control, Seventh Edition*. John Wiley & Sons, Inc.

Patyal, V. S., Modgil, S., & Koilakuntla, M. (2021). Application of Six Sigma methodology in an Indian chemical company. *International Journal of Productivity and Performance Management*, 70(2), 350–375. <https://doi.org/10.1108/IJPPM-03-2019-0128>

Primahesa, I. G., & Ngatilah, Y. (2022). *QUALITY ANALYSIS OF BAKERY PRODUCTS USING THE SIX SIGMA METHOD AND FAILURE MODE AND EFFECT ANALYSIS*. 1(2), 59–72.

Sajjad, M. H., Naeem, K., Zubair, M., Usman Jan, Q. M., Khattak, S. B., Omair, M., & Nawaz, R. (2021). Waste reduction of polypropylene bag manufacturing process using Six Sigma DMAIC approach: A case study. *Cogent Engineering*, 8(1). <https://doi.org/10.1080/23311916.2021.1896419>

Septiani, W., SD, T., & H, E. F. (2021). *Analisis Keputusan: Teori dan Implementasi*. Nas Media Pustaka.

Setiawan, B., Rimawan, E., & Santoso Saroso, D. (2021). Quality Improvement Using The DMAIC Method To Reduce Defect Product In The PVC Compounds Industry. *Volatiles & Essent. Oils*, 8(4), 5388–5405.

Singh, H., & Lal, Er. H. (2016). Application of DMAIC Technique in a Manufacturing Industry for Improving Process Performance - A Case Study. *International Journal on Emerging Technologies*, 7(2), 36–38.

Smętkowska, M., & Mrugalska, B. (2018). Using Six Sigma DMAIC to Improve the Quality of the Production Process: A Case Study. *Procedia - Social and Behavioral Sciences*, 238, 590–596. <https://doi.org/10.1016/j.sbspro.2018.04.039>

Subana, M., Sahrupi, S., & Supriyadi, S. (2021). Analisis Pengendalian Kualitas Produk Coil dengan Pendekatan Metode Six Sigma. *JiTEKH*, 9(1), 46–51. <https://doi.org/10.35447/jitekh.v9i1.333>

Wulandari, R. S., Hakim, L., Haris, R. F., Nahdlatul, U., & Sidoarjo, U. (2022). *Analysis of Product Defects in the Packing Production Process at PT . XYZ Using FTA and FMEA Methods*. 9(1), 52–60.

Yadav, N., Mathiyazhagan, K., & Kumar, K. (2019). Application of Six Sigma to minimize the defects in glass manufacturing industry: A case study. *Journal of Advances in Management Research*, 16(4), 594–624. <https://doi.org/10.1108/JAMR-11-2018-0102>