

IOP Conference Series: Earth and Environmental Science

Table of contents

Volume 737

2021

◀ Previous issue Next issue ▶

The 5th International Seminar on Sustainable Urban Development 5 August 2020, Jakarta, Indonesia

Accepted papers received: 29 March 2021

Published online: 19 April 2021

[Open all abstracts](#)

JOURNAL LINKS

[Journal home](#)

[Journal scope](#)

[Information for organizers](#)

[Information for authors](#)

[Contact us](#)

[Reprint services from Curran Associates](#)

PAPER • OPEN ACCESS

Preface

To cite this article: 2021 *IOP Conf. Ser.: Earth Environ. Sci.* **737** 011001

View the [article online](#) for updates and enhancements.

You may also like

- [Density Functional Theory Study of the Stress Impact on Formation Enthalpy of Intrinsic Point Defect around Dopant Atom in Ge Crystal](#)
Shunta Yamaoka, Koji Kobayashi and Koji Sueoka
- [Sustainable urban drainage as a viable measure of coping with heat and floods due to climate change](#)
N W Chan, M L Tan, A A Ghani et al.
- [SUDOQU, a new dose-assessment methodology for radiological surface contamination](#)
Teun van Dillen and Arjan van Dijk



ECS 244th Electrochemical Society Meeting

October 8 – 12, 2023 • Gothenburg, Sweden

50 symposia in electrochemistry & solid state science

▶ Deadline Extended!
Last chance to submit!

New deadline:
April 21
submit your abstract!

**5th INTERNATIONAL SEMINAR
ON SUSTAINABLE URBAN DEVELOPMENT
(5th ISoSUD) 2020**

PREFACE

International Seminar on Sustainable Urban Development (ISoSUD) is an International Seminar held by the Faculty of Landscape Architecture and Environmental Technology, Universitas Trisakti, Jakarta Indonesia. The 5th ISoSUD in 2020 carried the theme “**THE SUSTAINABLE DEVELOPMENT GOALS: INNOVATIONS IN ENVIRONMENTAL SUSTAINABILITY FOR BETTER WORLD**”. The ISoSUD has been conducted regularly every 3 years since 2008, and this year is very special because eventhough we are all facing a global pandemic, the enthusiasm of researchers and academics in Indonesia and around the world to participate is still high so that this seminar could be carried out virtually.

Due to the Covid-19 pandemic condition since early 2020 that does not allow the committee to gather many people in one place, this year ISoSUD could not be conducted like the four previous ISoSUD in the auditorium for 1-2 days. Thus the 5th ISoSUD was held virtually in 1 day, on Wednesday, August 5, 2020, using the zoom meeting facility. Although virtually, there were 200 participants in the plenary session. The call paper system that has been used since the first ISoSUD in 2008 succeeded in inviting 150 papers that selected into 100 papers were presented using digital technology via video recording. Those 100 papers were selected further to be published in IOP Proceedings Indexed by Scopus. As for the papers that do not pass the selection, they will be published in a national journal.

5th ISoSUD was also special because it involved co-hosting universities consist of eight from within the country and three from abroad: Universitas Tridianti Palembang; STT Pekanbaru; Universitas Fajar, Makasar; IT Del, Sitoulama, Sumatra Utara; Universitas Pasundan, Bandung; Universitas Negeri Manado; IT PLN, Jakarta; Universitas Pembangunan Jaya; Institute for Spatial Planning and Environment Research, India; University Putra Malaysia and University of Baghdad. Besides that, it was supported as well by professional association Ikatan Ahli Teknik Penyehatan Indonesia (IATPI), study program cooperation body (Badan Kerja Sama Teknik Lingkungan, BAKERMA-TL) and Global Water Partnership Southeast Asia (GWP-SEA).

The advisory board consists of prominent people in the 5th ISoSUD filed. The advisory board acts as ambassadors for the 5th ISoSUD. To some extent the quality of the 5th ISoSUD is approved by the members and academic credentials of its advisory boards.

In the plenary session, there were main speakers who delivered more focused seminar themes, they were:

Welcoming Speaker:

Prof. Dr. Agus Setyo Budi, M.Sc – Head of Service Institutions of Higher Education 3rd Region, Jakarta

Keynote speaker:



Prof. dr. Ali Ghufron Mukti M.Sc., Ph.D. – Rector of Universitas Trisakti, Jakarta

Invited speakers:

1. Fany Wedahuditama ST, MT, MA – Regional Coordinator of Global Water Partnership Southeast Asia
2. Prof. Madya Lar. Dr. Suhardi Maulan – Dean of Faculty of Architectural Design of Universiti Putra Malaysia, Malaysia
3. Prof. Dr. Kareem Hasan Alwan – Centre of Urban Regional Planning University of Baghdad, Iraq

While during the class presentation session, a presentation from the participants representing the 5th ISOsUD co-host was carried out. The number of seminar participants was around 200 people consist of academics, researchers, professionals that are from universities, government, private sector, industrial practician and other related institutions. The origin of seminar participants came from New Delhi-India, Baghdad-Iraq, Malaysia, Japan, USA and several provinces in Indonesia.

There were increasing in number of participants and speakers from various countries every time the ISOsUD was held. Several papers were co-authored by authors from Indonesia and other countries.

Hopefully the Covid-19 pandemic will pass soon. The committee hopes that the 6th ISOsUD in 2023 could be carried out under normal conditions, involving more speakers from different countries interact each other in the seminar room. In addition, the network for conducting seminars between several universities in Indonesia and abroad as co-hosts could also be improved.

Until we meet again in the 6th ISOsUD in 2023.

Jakarta, September, 2020

Chair person

5th International Seminar on Urban and Sustainable Development 2020

Dr. Ir. Diana Irvindiaty Hendrawan, MSi

LIST OF COMMITTEE**Conference Chair:**

Dr. Ir. Diana Irvindiaty Hendrawan, M.Si

International Advisory Boards:

- Prof. Dr. Agus Setyo Budi, M.Sc, LLDIKTI Region III, Jakarta, Indonesia
- Prof. dr. Ali Ghufron Mukti, M.Sc., Ph.D, Universitas Trisakti, Jakarta, Indonesia
- Fanny Wedahuditama ST., MT., MA, Global Water Partnership Southeast Asia
- Prof. Madya Lar. Dr. Suhardi Maulam, Universiti Putra Malaysia, Malaysia
- Prof. Madya. Dr. Mohd. Fairuz Shahidan, Universiti Putra Malaysia, Malaysia
- Mr. Jaswant Singh, Institut of Spatial Planning and Environment Research (ISPER), India
- Mr. K Surjit Singh, Institut of Spatial Planning and Environment Research (ISPER), India
- Prof. Dr. Kareem Hasan Alwan, University of Baghdad, Iraq
- Prof. Dr. Nada Khaleefah Alrikabi, University of Baghdad, Iraq
- Dr. Yosef Barita Sar Manik, ST, M.Sc, Institut Teknologi Del, Sumatera Utara, Indonesia
- Dr. Merry Meryam Martgrita, Institut Teknologi Del, Sumatera Utara, Indonesia
- Hartarto Tambunan, Ph.D, Institut Teknologi Del, Sumatera Utara, Indonesia
- Muhammad Sofyan, Institut Teknologi PLN, Jakarta, Indonesia
- Dr. Harnaedi Maizir, MT, Sekolah Tinggi Teknologi Pekanbaru, Riau, Indonesia
- Dr. Sinardi, ST, SP, M.Si, Universitas Fajar, Makassar, Sulawesi Selatan, Indonesia
- Ir. Frederik Josep Putuhena, M.Sc., Ph.D, Universitas Pembangunan Jaya, Jakarta, Indonesia
- Prof. Dr. Ir. H. Hazairin Samaulah, M.Eng., PhD, Universitas Tridinanti, Palembang

Scientific Committee

- Dr. Melati Ferianita Fachrul, MS, Universitas Trisakti, Jakarta, Indonesia
- Dr. Ir. Diana Irvindiaty Hendrawan, M.Si, Universitas Trisakti, Jakarta, Indonesia
- Dr. Astri Rinanti, MT, Universitas Trisakti, Jakarta, Indonesia
- Dr. Ir. Ratnaningsih, MT, Universitas Trisakti, Jakarta, Indonesia
- Ir. Rustam Hakim Manan, MT, Ph.D, Universitas Trisakti, Jakarta, Indonesia
- Ir. Ina Kristantia, M.Si., PhD, Universitas Trisakti, Jakarta, Indonesia
- Dr. Ir. Hanny W Wiranegara, MT, Universitas Trisakti, Jakarta
- Yonik Meilawati ST., MT., PhD, Universitas Pasundan, Bandung, Indonesia
- Dr. Evi Afiatun, ST, MT, Universitas Pasundan, Bandung, Indonesia
- Dr. Dra. Fadjari Lucia Nugroho, M.Sc., DEA, Universitas Pasundan, Bandung, Indonesia

Organizing committee

- Dr. MM. Sintorini Moerdjoko, M.Kes - Universitas Trisakti, Jakarta, Indonesia
- Dr. Rositayanti Hadisoebroto, ST, MT - Universitas Trisakti, Jakarta, Indonesia
- Dr. Ir. Ratnaningsih, MT - Universitas Trisakti, Jakarta, Indonesia
- Ir. Winarni, M.Sc - Universitas Trisakti, Jakarta, Indonesia
- Dr. Astri Rinanti, MT - Universitas Trisakti, Jakarta, Indonesia
- Tazkiaturrizki, ST., MT - Universitas Trisakti, Jakarta, Indonesia
- Lailatus Siami, ST., MT - Universitas Trisakti, Jakarta, Indonesia
- Riana Ayu Kusumadewi, ST, MT - Universitas Trisakti, Jakarta, Indonesia
- Dr. Ir. Hanny W. Wiranegara, MT - Universitas Trisakti, Jakarta, Indonesia
- Ir. Etty Indrawati, M.Si - Universitas Trisakti, Jakarta, Indonesia
- Ir. Pangaribowo, M.Si - Universitas Trisakti, Jakarta, Indonesia
- Marselinus Nirwan Luru, ST., M.Si - Universitas Trisakti, Jakarta, Indonesia
- Anindita Ramadhani, ST, MT - Universitas Trisakti, Jakarta, Indonesia
- Olivia Seanders, ST - Universitas Trisakti, Jakarta, Indonesia
- Arie Yulia Prasasti, A.Md - Universitas Trisakti, Jakarta, Indonesia

- Nurkholik, S.Kom - Universitas Trisakti, Jakarta, Indonesia
- Irmawati, SE., ME - Universitas Trisakti, Jakarta, Indonesia



Land Use Planning

OPEN ACCESS

012028

[Linkages between Solo-Selo-Borobudur as the Jawa Tengah Provincial tourism strategic area](#)

A J Pinanigas, E Fatimah and A Ramadhani

[+ Open abstract](#)

[View article](#)

[PDF](#)

OPEN ACCESS

012029

[The characteristic of urban sprawl in Bekasi City, Indonesia](#)

D P Sari, A S Wartaman and M N Luru

[+ Open abstract](#)

[View article](#)

[PDF](#)

OPEN ACCESS

012030

[Effect of distance of housing to airport on noise disturbances level \(case: housing around Soekarno-Hatta International Airport\)](#)

R Wigatiningrum, H W Wiranegara and M N Luru

[+ Open abstract](#)

[View article](#)

[PDF](#)

OPEN ACCESS

012031

[Locational choice strategy: How FDI's choice of Indonesia as an investment location towards competitiveness advantage](#)

PAPER • OPEN ACCESS

Linkages between Solo-Selo-Borobudur as the Jawa Tengah Provincial tourism strategic area

To cite this article: A J Pinanigas *et al* 2021 *IOP Conf. Ser.: Earth Environ. Sci.* **737** 012028

View the [article online](#) for updates and enhancements.

You may also like

- [Nonpoisson queueing analysis of patas bus on the west and east line at Tirtanadi Surakarta bus station](#)
M Asri, Sugito, A Hoyyi et al.

- [Water Quality Monitoring and Evaluation in the Bengawan Solo River Region](#)
A Sri Wahyu Kusumastuti, B Moh Bisri, C Solichin et al.

- [City image towards tourist attraction \(case in Solo, Central Java\) examining city image of solo as tourist attraction](#)
T Wiyana, T S Putranto, A Zulkarnain et al.



ECS 244th Electrochemical Society Meeting

October 8 – 12, 2023 • Gothenburg, Sweden

50 symposia in electrochemistry & solid state science

▶ Deadline Extended!
Last chance to submit!

New deadline:
April 21
submit your abstract!

Linkages between Solo-Selo-Borobudur as the Jawa Tengah Provincial tourism strategic area

A J Pinanigas, E Fatimah* and A Ramadhani

Urban and Regional Planning Department, Faculty of Landscape Architecture and Environmental Technology, Trisakti University, Indonesia

*endrawati@trisakti.ac.id

Abstract. Provincial Strategic Areas (PSA) are areas prioritized in spatial planning because of their significantly influence on economy, socio-culture, or environment perspectives. Solo-Selo-Borobudur is designed as one of Central Java PSAs. This PSA is expected to become a tourism corridor area and the sub areas within the PSA are expected to be equally developed and integrated as a single entity. In fact, there is a significant difference in the number of tourists visiting the three areas, which indicates an imbalance in the level of development. This study aims to examine the level of development of each sub-area and to identify the level of linkages between them in terms of their activities. The scoring method was used to identify the level of development in terms of attraction, accessibility, amenities and ancillary services (4A) aspects. A questionnaire survey was also conducted to explore tourism behaviour in order to identify linkages between the three tourism areas. The data obtained is analyzed by using spatial descriptive method. The result of this study shows the level of development of Solo and Borobudur tourism sub-areas can be classified high level, while Selo is still low (undeveloped). The study also found that the linkage between Solo - Borobudur tourism activities was stronger than between Solo - Selo and Selo - Borobudur. As the PSA, the linkage between the three tourism areas is still low. The findings are expected to be related to differences in the level of development between the three areas.

1. Introduction

Regional linkages are highly related to regional interactions, which is a reciprocal relationship between two or more regions that influence each other and can cause new symptoms or problems both directly and indirectly [1,2]. The linkages between two or more region can establish if there are complementary relationship, transferability and intervening opportunity between them [3]. The concept of regional linkages can be applied to promote such potential tourist area by using the advantages of other tourist areas around it that have been more developed.

The Central Java Provincial Government uses the linkages concept in developing Solo-Selo-Borobudur tourism area. This tourism area as a single entity considered to have a very important influence on the economic development of the province. Then, the government of Central Java set the area as a Provincial Strategic Area, especially for the development of the tourism-based economic sector. PSA Solo-Selo-Borobudur tourism area consists of three tourism sub areas 1) Solo Tourism Sub-Area covering tourism destinations in Surakarta City; 2) Selo tourism Sub –Area covering tourism destinations in Selo sub-district, Boyolali Regency and 3) Borobudur Tourism Sub Area covering tourism destinations in Borobudur temple and surroundings which is located in Magelang Regency [4].



Based on data from the Central Java Tourism Office, in the year of 2017, the number of tourist visiting Solo Sub-Area and Borobudur Sub-Area were respectively around 4.4 million and 3.3 million, while the tourist visiting Selo was only 10 thousand [5-7]. This disparity phenomenon shows that the linkages between the three tourism areas in PSA Solo - Selo - Borobudur have not been established as expected. This study was conducted to examine the level of linkages between 3 tourist areas in PSA Solo-Selo-Borobudur. The aims of this study are to identify the level of development of each tourism sub-areas as a part of the Provincial Tourism Strategic Area and to analyze the linkage between Solo, Selo and Borobudur tourism sub-areas as an integrated Provincial Tourism Strategic Area.

2. Methods

The approach used in this research is a quantitative descriptive approach that usually is applied to test the theory [8,9]. The data used in this study are both primary and secondary data. Primary data were obtained from observations and Secondary data were obtained from local government agencies as well as regional Central Bureau of Statistics.

The analysis method used is a scoring technique on secondary data for determining the level of development of each sub-area based on four variables of tourism development, namely 4 A (attractions, accessibility, amenities, and ancillary services) [10,11]. Each variable have some indicators (see Table 1). Scoring is given on each indicator based on the valuation on the existing condition of each tourism object in each tourism sub-area. Each indicator on each variable is given a value of 1, 2 or 3, which respectively represents poor, moderate or good conditions. Then, the level of development for each variable as well as for the whole variables (4A) are classified into High, Medium or Low level of development by using the Sturges formulation as follow [12].

$$K = \frac{a - b}{u} \quad (1)$$

Where:

K = Interval

a = highest scoring value within each variable (score 3 x number of indicator)

b = lowest scoring value within each variable (score 1 x number of indicator)

u = number of class

Table 1. Variables, indicators and classification.

Variable	Indicator	Score indicate Level of Development		
		Low	Medium	High
Attraction	A. Attraction Strength	6 - 9	10-13	14-18
	B. Tourism Activity on Location			
	C. Supporting Attraction Diversity			
	D. Condition of Tourism Object			
	E. Environmental Cleanliness			
	F. Public Facility on Tourism Object			
Accessibility	A: Distance to other tourism objects in a sub-area	7-11	12-16	17-21
	B: Travel time to the nearest bus station			
	C: Travel time to the nearest railway station			
	D: Travel time to the nearest airport			
	E: Availability of public transportation			
	F: Availability of various modes of transportation			
	G: Roads conditions to the location			
Amenity	A: Hotels and Lodgings	4 - 6	7 - 9	10-12
	B: Restaurants			
	C: Souvenir Shops			
	D: Travel Agents			
Ancillary Services	A: Police Station	6 - 9	10 - 13	14 -18
	B: Fire Station			
	C: Waste Management			
	D: Telecommunication Network			
	E: Bank			
	F: Water supply services			
The whole Variable (4 A)		23- 38	39 - 53	54-59

Sources: compiled from [12-17]

According to Sugiyono [8] Descriptive analysis is a statistic used to analyze data by describing or describing data that has been collected as it is without intending to make conclusions that apply to the public or generalizations spatial descriptive. Based on the geographical perspective, spatial is all things related to the place or location. The definition of the place is very measurable, clear and can be measured quantitatively because the location is above the surface of the earth [2,18].

3. Results and discussion

3.1. The development level of tourism sub areas

Based on the results of scoring of each tourism development aspects for three Tourism Sub- Area, we can compare the development level of sub-area and identify the level of development of the whole Solo-Selo-Borobudur Strategic Tourism Area (see table 2). Table 2 shows that the level development of Solo Sub Area and Borobudur Sub Area are in high level while Selo Sub Area is still low that means relatively underdeveloped.

Table 2. Score and level of development based on scoring of 4 variables.

Variabel	Sub Area	Total Score	Classification
Attraction	Solo	13,6	High
	Selo	11,5	Medium
	Borobudur	14	High
Accebility	Solo	20	High
	Selo	9,5	Low
	Borobudur	17	High
Amenities	Solo	9,4	High
	Selo	5,5	Low
	Borobudur	9,3	High
Ancillary Services	Solo	14	High
	Selo	9	Medium
	Borobudur	14	High
Sub Area Total Score			
	Sub Area Solo	57	High
	Sub Area Selo	35,5	Low
	Sub Area Borobudur	54,3	High

Based on the average tourist visits on tourism objects 2012-2019, 93% of the tourist is dominated by domestic tourists. However, based on the interviews with travel agents and local governments, actually 70% of the tourists targeted are international tourists. This has causes imbalance in the target of tourist visits to PSA Solo-Selo-Borobudur tourism destinations.

3.2. The linkages of PSA Solo-Selo-Borobudur

Linkage analysis was done in order to identify the strenght of PSA Solo-Selo-Borobudur as an integrated system. The analysis was done by interviewing stakeholders (government, tourist agents) based on 4A.

3.2.1. Attractiveness linkage analysis. The linkage analysis based of the potential attraction will discuss the results of interviews with travel agents and the local government agencies. Based on the information from 10 travel agents appointed as informants, we acknowledge that they offer tour packages for Solo-Selo-Borobudur corridor area.

From the interview's results, Jogja-Borobudur tour packages and surrounding areas are the packages offered. More details can be seen in Table 3. We can see the strongest linkages are found in the Solo Tourism Sub Area with Borobudur Tourism Sub Area as much as 19% and the lowest linkage is found in the Solo Tourism Sub Area and the Selo Tourism Sub Area as much as 11%.

Table 3. Number of tourism destination package availability offered by travel agents.

Tourism Destination	Package Provider Travel Agent	Percentage
Borobudur-Jogja	10	27%
Solo-Jogja	6	16%
Solo-Borobudur and Surrounding Area	7	19%
Borobudur-Selo and Surrounding Area	6	16%
Solo-Selo and Surrounding Area	4	11%
Solo-Selo-Borobudur	4	11%

3.2.2. *Accessibility linkage analysis.* The common route for travel agents to move between tourist locations on these three sub areas of Solo-Selo-Borobudur are divided by 2 starting points: Solo sub-area and Borobudur sub-area. Selo sub-area is not used as starting point due to lack of tourist accommodations. The starting point determine on how the travelling route would be laid out. There are 4 common routes that used by travel agents to move between tourism areas, namely solo route (through Selo), Kopeng route via toll road, kopeng route via non-toll road, and jogja route (through D.I. Yogyakarta Province). The highest option route from Solo by passing Kopeng (toll 18% and non-toll 27%) as much as 45%. On the other hand, if tourists are in Borobudur they usually interested to go to tourist destinations in Solo, by Jogja’s route as much as 46%. The least route from both starts is by Selo.

3.2.3. *Amenities linkage analysis.* According to travel agents, the most preferable area for tourist to stay is Solo and Jogja respectively 44%, while Borobudur sub-areas only contribute 12% of respondents. Selo is not preferable due to less facilities and segmented attractions; people who interested to stay there mostly for hiking and/or camping so they don’t need as plenty facilities as the general tourists.

As in food facilities, most preferable area to dine with numerous choices of culinary options, is in Solo tourism sub-area by 38%. Meanwhile, Borobudur Tourism Sub-area and Selo tourism sub-area are lagging behind, with 19% and 14% respectively. It is due to similar culinary variety with Solo and Jogja. Without distinctive variety of foods, the tourists would opt to the ones that easier to access and closer to their accommodation.

3.2.4. *Ancillary services linkage analysis.* From the results of interview with travel agents, 60% travel agents are aware that there is socialization from the local government regarding PSA Solo-Selo-Borobudur policy. While the other four travel agents mentioned that they were unaware of this policy and claimed that there was no socialization.

Regarding the travel package, 90% Selo travel agents mentioned that the tour packages in Solo can be combined with the tour packages in Selo and its surrounding areas. According to local Government Agencies, tour packages in Selo can also be combined with tour packages in Solo. Meanwhile, regarding tour packages for Borobudur and surrounding areas with Ketep Pass, that the tour can be combined in tour packages. According to local Government Agencies, tourism in Ketep Pass can also be combined and a number of travel agents have already included the package in Borobudur tour packages and surrounding areas. So, it can be concluded that actually, the development of Solo-Selo-Borobudur PSA as an integrated tourism area is already well known, but in reality, it is only half linked.

3.3. Discussion

On the discussion of PSA Solo-Selo-Borobudur linkage, we can see from the perspective of area developments that the highest scoring is produced by Solo tourism sub-area. However, Borobudur and its surroundings becomes the most visited area by tourists both by foreign and domestic tourists. The linkage and tourism clusters can be seen in the Figure 1.

- Metropolitan *J. Wil. dan Lingkungan*. **1** 105–22
- [3] Putra A P, Wijayanti T and Prasetyo J S 2019 Analisis Dampak Berganda (Multiplier Effect) Objek Wisata Pantai Watu Dodol Banyuwangi *J. Tour. Creat.* **1**
- [4] Peraturan Daerah Provinsi Jawa Tengah Nomor 6 Tahun 2010 *Rencana Tata Ruang Wilayah Provinsi Jawa Tengah Tahun 2009-2029*
- [5] Badan Pusat Statistik 2018 Badan Pusat Statistik Kota Surakarta, Kota Surakarta Dalam Angka 2018
- [6] Badan Pusat Statistik 2018 Badan Pusat Statistik Kabupaten Magelang Kabupaten Magelang Dalam Angka 2018
- [7] Badan Pusat Statistik 2018 Badan Pusat Statistik Kabupaten Boyolali Kabupaten Boyolali Dalam Angka 2018
- [8] Sugiyono 2012 *Metode Penelitian Kuantitatif Kualitatif dan R&D (Qualitative, Quantitative, Research Methods and R&D)* (Bandung: Alfabeta-Bandung)
- [9] Luthfi A and Yuliasuti N 2017 Pengaruh Faktor Spasial Dan A-Spasial Terhadap Preferensi Masyarakat Kampung Tambak Lorok Tinggal Di Rumah Susun *Tek. PWK (Perencanaan Wil. Kota)* **6** 232–41
- [10] Cooper C 1995 Strategic planning for sustainable tourism: The case of the offshore islands of the UK *J. Sustain. Tour.* **3** 191–209
- [11] Hermantoro H 2015 Kepariwisata, Destinasi Pariwisata dan Produk Pariwisata *Depok Aditri Publ.*
- [12] Arifiana R D, Priyono K D and Umrotun 2016 Analisis Potensi dan Pengembangan Wisata Pantai di Kota Semarang
- [13] Ginting I A, Patana P and Rahmawaty R 2013 Penilaian dan Pengembangan Potensi Objek dan Daya Tarik Wisata Alam di Taman Wisata Alam (TWA) Sibolangit (Assessment and Development of Object Potency and Pull Factor of Ecotourism at Sibolangit Recreational Park) *Peronema For. Sci. J.* **2** 74–81
- [14] Takumansang E D 2010 Kajian Penempatan Fasilitas Pendidikan Dasar dan Menengah dalam Aspek Sistem Informasi Geografis *TEKNO* **8**
- [15] Firmansyah D P W K 2010 Penentuan Prioritas Pengembangan Wisata Alam di Kabupaten Lebak
- [16] Way I H, Wuisang C E V and Supardjo S 2016 Analisis Kebutuhan Prasarana Dan Sarana Pariwisata Di Danau Uter Kecamatan Aitinyo Kabupaten Maybrat Propinsip Papua Barat *SPASIAL* **3** 27–37
- [17] Nawangsari D, Muryani C and Utomowati R 2018 Pengembangan Wisata Pantai Desa Watu Karung dan Desa Sendang Kabupaten Pacitan Tahun 2017 *GeoEco* **4**
- [18] Rustiadi E, Saefulhakim S and Panuju D R 2009 Perencanaan dan Pembangunan Wilayah *Yayasan Pustaka Obaor Indones. Jakarta*

IOP_Conf._Ser.
_Earth_Environ._Sci._737_01202
8

by Endrawati Fatimah

Submission date: 10-Apr-2023 11:50AM (UTC+0700)

Submission ID: 2060259613

File name: inanigas_2021_IOP_Conf._Ser._Earth_Environ._Sci._737_012028.pdf (1.18M)

Word count: 3112

Character count: 16747

PAPER · OPEN ACCESS

Linkages between Solo-Selo-Borobudur as the Jawa Tengah Provincial tourism strategic area

To cite this article: A J Pinanigas *et al* 2021 *IOP Conf. Ser.: Earth Environ. Sci.* **737** 012028

View the [article online](#) for updates and enhancements.

You may also like

- 7 - [Nonpoisson queueing analysis of palas bus on the west and east line at Tirtanadi Surakarta bus station](#)
M Asri, Sugito, A Hoyyi et al.
- 8 - [Water Quality Monitoring and Evaluation in the Bengawan Solo River Region](#)
A Sri Wahyu Kusumastuti, B Moh Bisri, C Solichin et al.
- 3 - [City Image towards tourist attraction \(case Solo, Central Java\) examining city image of solo as tourist attraction](#)
T Wiyana, T S Putranto, A Zulkarnain et al.



244th Electrochemical Society Meeting

October 8 – 12, 2023 • Gothenburg, Sweden

50 symposia in electrochemistry & solid state science

▶ Deadline Extended!
Last chance to submit!

New deadline:
April 21
submit your abstract!

10 Linkages between Solo-Selo-Borobudur as the Jawa Tengah Provincial tourism strategic area

6
A J Pinanigas, E Fatimah* and A Ramadhani

Urban and Regional Planning Department, Faculty of Landscape Architecture and
Environmental Technology, Trisakti University, Indonesia

*endrawati@trisakti.ac.id

Abstract. Provincial Strategic Areas (PSA) are areas prioritized in spatial planning because of their significantly influence on economy, socio-culture, or environment perspectives. Solo-Selo-Borobudur is designed as one of Central Java PSAs. This PSA is expected to become a tourism corridor area and the sub areas within the PSA are expected to be equally developed and integrated as a single entity. In fact, there is a significant difference in the number of tourists visiting the three areas, which indicates an imbalance in the level of development. This study aims to examine the level of development of each sub-area and to identify the level of linkages between them in terms of their activities. The scoring method was used to identify the level of development in terms of attraction, accessibility, amenities and ancillary services (4A) aspects. A questionnaire survey was also conducted to explore tourism behaviour in order to identify linkages between the three tourism areas. The data obtained is analyzed by using spatial descriptive method. The result of this study shows the level of development of Solo and Borobudur tourism sub-areas can be classified high level, while Selo is still low (undeveloped). The study also found that the linkage between Solo - Borobudur tourism activities was stronger than between Solo - Selo and Selo - Borobudur. As the PSA, the linkage between the three tourism areas is still low. The findings are expected to be related to differences in the level of development between the three areas.

1. Introduction

1
Regional linkages are highly related to regional interactions, which is a reciprocal relationship between two or more regions that influence each other and can cause new symptoms or problems both directly and indirectly [1,2]. The linkages between two or more region can establish if there are complementary relationship, transferability and intervening opportunity between them [3]. The concept of regional linkages can be applied to promote such potential tourist area by using the advantages of other tourist areas around it that have been more developed.

The Central Java Provincial Government uses the linkages concept in developing Solo-Selo-Borobudur tourism area. 13
tourism area as a single entity considered to have a very important influence on the economic development of the province. Then, the government of Central Java set the area as a Provincial Strategic Area, especially for the development of the tourism-based economic sector. PSA Solo-Selo-Borobudur tourism area consists of three tourism sub areas 1) Solo Tourism Sub-Area covering tourism destinations in Surakarta City; 2) Selo tourism Sub -Area covering tourism destinations in Selo sub-district, Boyolali Regency and 3) Borobudur Tourism Sub Area covering tourism destinations in Borobudur temple and surroundings which is located in Magelang Regency [4].



Content from this work may be used under the terms of the Creative Commons Attribution 3.0 licence. Any further distribution of this work must maintain attribution to the author(s) and the title of the work, journal citation and DOI.

Based on data from the Central Java Tourism Office, in the year of 2017, the number of tourist visiting Solo Sub-Area and Borobudur Sub-Area were respectively around 4.4 million and 3.3 million, while the tourist visiting Solo was only 10 thousand [5-7]. This disparity phenomenon shows that the linkages between the three tourism areas in PSA Solo - Solo - Borobudur have not been established as expected. This study was conducted to examine the level of linkages between 3 tourist areas in PSA Solo-Solo-Borobudur. The aims of this study are to identify the level of development of each tourism sub-areas as a part of the Provincial Tourism Strategic Area and to analyze the linkage between Solo, Solo and Borobudur tourism sub-areas as an integrated Provincial Tourism Strategic Area.

1.1 Methods

The approach used in this research is a quantitative descriptive approach that usually is applied to test the theory [8,9]. The data used in this study are both primary and secondary data. Primary data were obtained from observations and Secondary data were obtained from local government agencies as well as regional Central Bureau of Statistics.

The analysis method used is a scoring technique on secondary data for determining the level of development of each sub-area based on four variables of tourism development, namely 4 A (attractions, accessibility, amenities, and ancillary services) [10,11]. Each variable have some indicators (see Table 1). Scoring is given on each indicator based on the valuation on the existing condition of each tourism object in each tourism sub-area. Each indicator on each variable is given a value of 1, 2 or 3, which respectively represents poor, moderate or good conditions. Then, the level of development for each variable as well as for the whole variables (4A) are classified into High, Medium or Low level of development by using the Sturges formulation as follow [12].

$$K = \frac{a - b}{u} \tag{1}$$

Where:

K = Interval

a = highest scoring value within each variable (score 3 x number of indicator)

b = lowest scoring value within each variable (score 1 x number of indicator)

u = number of class

Table 1. Variables, indicators and classification.

Variable	Indicator	Score indicate Level of Development		
		Low	Medium	High
Attraction	A. Attraction Strength	6 - 9	10-13	14-18
	B. Tourism Activity on Location			
	C. Supporting Attraction Diversity			
	D. Condition of Tourism Object			
	E. Environmental Cleanliness			
	F. Public Facility on Tourism Object			
Accessibility	A. Distance to other tourism objects in a sub-area	7-11	12-16	17-21
	B. Travel time to the nearest bus station			
	C. Travel time to the nearest railway station			
	D. Travel time to the nearest airport			
	E. Availability of public transportation			
	F. Availability of various modes of transportation			
	G. Roads conditions to the location			
Amenity	A: Hotels and Lodgings	4 - 6	7 - 9	10-12
	B: Restaurants			
	C: Souvenir Shops			
	D: Travel Agents			
Ancillary Services	A: Police Station	6- 9	10 - 13	14 -18
	B: Fire Station			
	C: Waste Management			
	D: Telecommunication Network			
	E: Bank			
	F: Water supply services			
The whole Variable (4 A)		23- 38	39 - 53	54-59

Sources: compiled from [12-17]

4 According to Sugiyono [8] Descriptive analysis is a statistic used to analyze data by describing or describing data that has been collected as it is without intending to make conclusions that apply to the public or generalizations spatial descriptive. Based on the geographical perspective, spatial is all things related to the place or location. The definition of the place is very measurable, clear and can be measured quantitatively because the location is above the surface of the earth [2,18].

3. Results and discussion

3.1. The development level of tourism sub areas

Based on the results of scoring of each tourism development aspects for three Tourism Sub- Area, we can compare the development level of sub-area and identify the level of development of the whole Solo-Selo-Borobudur Strategic Tourism Area (see table 2). Table 2 shows that the level development of Solo Sub Area and Borobudur Sub Area are in high level while Selo Sub Area is still low that means relatively underdeveloped.

Table 2. Score and level of development based on scoring of 4 variables.

Variabel	Sub Area	Total Score	Classification
Attraction	Solo	13,6	High
	Selo	11,5	Medium
	Borobudur	14	High
Acceability	Solo	20	High
	Selo	9,5	Low
	Borobudur	17	High
Amenities	Solo	9,4	High
	Selo	5,5	Low
	Borobudur	9,3	High
Ancillary Services	Solo	14	High
	Selo	9	Medium
	Borobudur	14	High
Sub Area Total Score			
	Sub Area Solo	57	High
	Sub Area Selo	35,5	Low
	Sub Area Borobudur	54,3	High

Based on the average tourist visits on tourism objects 2012-2019, 93% of the tourist is dominated by domestic tourists. However, based on the interviews with travel agents and local governments, actually 70% of the tourists targeted are international tourists. This has causes imbalance in the target of tourist visits to PSA Solo-Selo-Borobudur tourism destinations.

3.2. The linkages of PSA Solo-Selo-Borobudur

Linkage analysis was done in order to identify the strenght of PSA Solo-Selo-Borobudur as an integrated system. The analysis was done by interviewing stakeholders (government, tourist agents) based on 4A.

3.2.1. *Attractiveness linkage analysis.* The linkage analysis based of the potential attraction will discuss the results of interviews with travel agents and the local government agencies. Based on the information from 10 travel agents appointed as informants, we acknowledge that they offer tour packages for Solo-Selo-Borobudur corridor area.

From the interview's results, Jogja-Borobudur tour packages and surrounding areas are the packages offered. More details can be seen in Table 3. We can see the strongest linkages are found in the Solo Tourism Sub Area with Borobudur Tourism Sub Area as much as 19% and the lowest linkage is found in the Solo Tourism Sub Area and the Selo Tourism Sub Area as much as 11%.

Table 3. Number of tourism destination package availability offered by travel agents.

Tourism Destination	Package Provider Travel Agent	Percentage
Borobudur-Jogja	10	27%
Solo-Jogja	6	16%
Solo-Borobudur and Surrounding Area	7	19%
Borobudur-Selo and Surrounding Area	6	16%
Solo-Selo and Surrounding Area	4	11%
Solo-Selo-Borobudur	4	11%

3.2.2. Accessibility linkage analysis. The common route for travel agents to move between tourist locations on these three sub areas of Solo-Selo-Borobudur are divided by 2 starting points: Solo sub-area and Borobudur sub-area. Selo sub-area is not used as starting point due to lack of tourist accommodations. The starting point determine on how the travelling route would be laid out. There are 4 common routes that used by travel agents to move between tourism areas, namely solo route (through Selo), Kopeng route via toll road, kopeng route via non-toll road, and jogja route (through D.I. Yogyakarta Province). The highest option route from Solo by passing Kopeng (toll 18% and non-toll 27%) as much as 45%. On the other hand, if tourists are in Borobudur they usually interested to go to tourist destinations in Solo, by Jogja's route as much as 46%. The least route from both starts is by Selo.

3.2.3. Amenities linkage analysis. According to travel agents, the most preferable area for tourist to stay is Solo and Jogja respectively 44%, while Borobudur sub-areas only contribute 12% of respondents. Selo is not preferable due to less facilities and segmented attractions; people who interested to stay there mostly for hiking and/or camping so they don't need as plenty facilities as the general tourists.

As in food facilities, most preferable area to dine with numerous choices of culinary options, is in Solo tourism sub-area by 38%. Meanwhile, Borobudur Tourism Sub-area and Selo tourism sub-area are lagging behind, with 19% and 14% respectively. It is due to similar culinary variety with Solo and Jogja. Without distinctive variety of foods, the tourists would opt to the ones that easier to access and closer to their accommodation.

3.2.4. Ancillary services linkage analysis. From the results of interview with travel agents, 60% travel agents are aware that there is socialization from the local government regarding PSA Solo-Selo-Borobudur policy. While the other four travel agents mentioned that they were unaware of this policy and claimed that there was no socialization.

Regarding the travel package, 90% Selo travel agents mentioned that the tour packages in Solo can be combined with the tour packages in Selo and its surrounding areas. According to local Government Agencies, tour packages in Selo can also be combined with tour packages in Solo. Meanwhile, regarding tour packages for Borobudur and surrounding areas with Ketep Pass, that the tour can be combined in tour packages. According to local Government Agencies, tourism in Ketep Pass can also be combined and a number of travel agents have already included the package in Borobudur tour packages and surrounding areas. So, it can be concluded that actually, the development of Solo-Selo-Borobudur PSA as an integrated tourism area is already well known, but in reality, it is only half linked.

3.3. Discussion

On the discussion of PSA Solo-Selo-Borobudur linkage, we can see from the perspective of area developments that the highest scoring is produced by Solo tourism sub-area. However, Borobudur and its surroundings becomes the most visited area by tourists both by foreign and domestic tourists. The linkage and tourism clusters can be seen in the Figure 1.

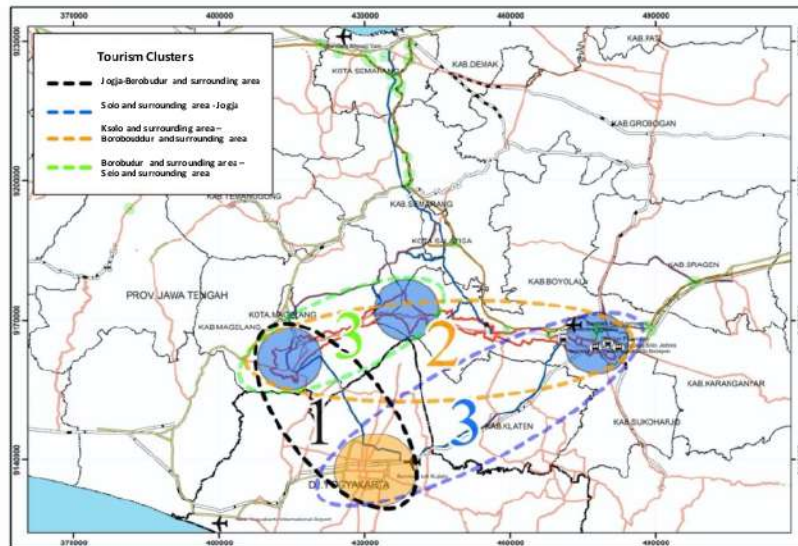


Figure 1. Tourism Cluster based on the highest linkage.

Based on the linkage between the sub areas itself, the leading tourism package is Solo-Borobudur. This tour package is still inferior to Jogja-Borobudur tour packages as stated by every travel agents acted as samples in this research. However, the travel agents mentioned that cultural attractions in Solo are still less attractive if compared to cultural attractions in Borobudur tourism sub area and Yogyakarta City.

Borobudur and Selo areas are located on the mountainous area, make them share some characteristic similarities on their attractions. Hence, a cluster could be formed between the two. On the other hand, Solo and Selo don't share similar trait. Not to mention, the road to Selo is still rough make it more difficult to be linked together. The result is partially clustered in the PSA.

Interestingly, DI, Yogyakarta (Jogja) apparently has fairly strong linkage to the PSA. It was proven by the formation of cluster Jogja-Borobudur and Solo-Jogja. Jogja also has similar characteristic of attractions with Borobudur and Solo tourism sub-area. Cross-provincial cooperation could be considered to build a wholesome linkage of the tourism areas (see Figure 1).

4 Conclusion

Based on the development analysis on 4A aspects, we can see that Solo Sub-Area and Borobudur Sub-Area have developed as tourism areas with high development level, meanwhile Selo Sub Area categorized as area with low development level. Even so, the number of foreign tourists visiting the PSA tourism areas is not as much as expected.

In line with their level of developments, the strongest tourism linkage has established between Solo Sub Area and Borobudur Sub. This strong linkage is very likely due to the similarity in the types of tourist attractions offered and the level of development that the two sub-areas have. Based on this, the linkages that occurs between the two sub-areas (Solo and Borobudur) on the PSA Solo-Selo-Borobudur and Jogjakarta City (outside the PSA) can be understood since Jogjakarta area also offers cultural tourism. Meanwhile, Selo Sub-Area which is naturally a mountainous area offers different tourist attractions and still has limitations relating to aspects of accessibility, amenity and ancillary services.

References

- [1] Yunus H S 2006 *Megapolitan: konsep, problematika, dan prospek* (Pustaka Pelajar)
- [2] Rahayu T A 2013 Keterkaitan Kota Demak terhadap Kota Semarang dalam Lingkup Wilayah

- Metropolitan *J. Wil. dan Lingkungan*. **1** 105–22
- [3] Putra A P, Wijayanti T and Prasetyo J S 2019 Analisis Dampak Berganda (Multiplier Effect) Objek Wisata Pantai Watu Dodol Banyuwangi *J. Tour. Creat.* **1**
- [4] Peraturan Daerah Provinsi Jawa Tengah Nomor 6 Tahun 2010 *Rencana Tata Ruang Wilayah Provinsi Jawa Tengah Tahun 2009-2029*
- [5] Badan Pusat Statistik 2018 Badan Pusat Statistik Kota Surakarta, Kota Surakarta Dalam Angka 2018
- [6] Badan Pusat Statistik 2018 Badan Pusat Statistik Kabupaten Magelang Kabupaten Magelang Dalam Angka 2018
- [7] Badan Pusat Statistik 2018 Badan Pusat Statistik Kabupaten Boyolali Kabupaten Boyolali Dalam Angka 2018
- [8] Sugiyono 2012 *Metode Penelitian Kuantitatif Kualitatif dan R&D (Qualitative, Quantitative, Research Methods and R&D)* (Bandung: Alfabeta-Bandung)
- [9] Luthfi A and Yuliastuti N 2017 Pengaruh Faktor Spasial Dan A-Spasial Terhadap Preferensi Masyarakat Kampung Tambak Lorok Tinggal Di Rumah Susun *Tek. PWK (Perencanaan Wil. Kota)* **6** 232–41
- [10] Cooper C 1995 Strategic planning for sustainable tourism: The case of the offshore islands of the UK *J. Sustain. Tour.* **3** 191–209
- [11] Hermantoro H 2015 Kepariwisata, Destinasi Pariwisata dan Produk Pariwisata *Depok Aditri Publ.*
- [12] Arifiana R D, Priyono K D and Umrotun 2016 Analisis Potensi dan Pengembangan Wisata Pantai di Kota Semarang
- [13] Ginting I A, Patana P and Rahmawaty R 2013 Penilaian dan Pengembangan Potensi Objek dan Daya Tarik Wisata Alam di Taman Wisata Alam (TWA) Sibolangit (Assessment and Development of Object Potency and Pull Factor of Ecotourism at Sibolangit Recreational Park) *Peronema For. Sci. J.* **2** 74–81
- [14] Takumansang E D 2010 Kajian Penempatan Fasilitas Pendidikan Dasar dan Menengah dalam Aspek Sistem Informasi Geografis *TEKNO* **8**
- [15] Firmansyah D P W K 2010 Penentuan Prioritas Pengembangan Wisata Alam di Kabupaten Lebak
- [16] Way I H, Wuisang C E V and Supardjo S 2016 Analisis Kebutuhan Prasarana Dan Sarana Pariwisata Di Danau Uter Kecamatan Aitinyo Kabupaten Maybrat Propinsis Papua Barat *SPASIAL* **3** 27–37
- [17] Nawangsari D, Muryani C and Utomowati R 2018 Pengembangan Wisata Pantai Desa Watu Karang dan Desa Sendang Kabupaten Pacitan Tahun 2017 *GeoEco* **4**
- [18] Rustiadi E, Saefulhakim S and Panuju D R 2009 Perencanaan dan Pembangunan Wilayah *Yayasan Pustaka Obaor Indones. Jakarta*

ORIGINALITY REPORT

15%

SIMILARITY INDEX

9%

INTERNET SOURCES

3%

PUBLICATIONS

10%

STUDENT PAPERS

PRIMARY SOURCES

1	Submitted to Curtin University of Technology Student Paper	6%
2	research.aalto.fi Internet Source	2%
3	china.iopscience.iop.org Internet Source	1%
4	digilib.unimed.ac.id Internet Source	1%
5	ejournal.unsa.ac.id Internet Source	1%
6	www.ijstr.org Internet Source	1%
7	www.mdpi.com Internet Source	<1%
8	www.semanticscholar.org Internet Source	<1%
9	OSSI KOTAVAARA. "Scale in the effect of accessibility on population change: GIS and a statistical approach to road, air and rail	<1%

accessibility in Finland, 1990-2008 : Matter of scale in the effect of accessibility on population change", Geographical Journal, 04/2012

Publication

10

jglobal.jst.go.jp

Internet Source

<1 %

11

ejournal3.undip.ac.id

Internet Source

<1 %

12

www.balitourism.or.id

Internet Source

<1 %

13

www.scribd.com

Internet Source

<1 %

14

John S. Felkner, Hyun Lee, Sabina Shaikh, Alan Kolata, Michael Binford. "The interrelated impacts of credit access, market access and forest proximity on livelihood strategies in Cambodia", World Development, 2022

Publication

<1 %

Exclude quotes

Off

Exclude matches

Off

Exclude bibliography

On



International Seminar on
Sustainable Urban Development



Faculty of Landscape Architecture and Environmental Technology
Universitas Trisakti, Jakarta, Indonesia

Certificate

Awarded to:

Aulya Jyesta Pinanigas, Endrawati Fatimah, and Anindita Ramadhani

We express our sincerest gratitude for your contribution as

PRESENTERS

On 5th International Seminar on Sustainable Urban Development 2020

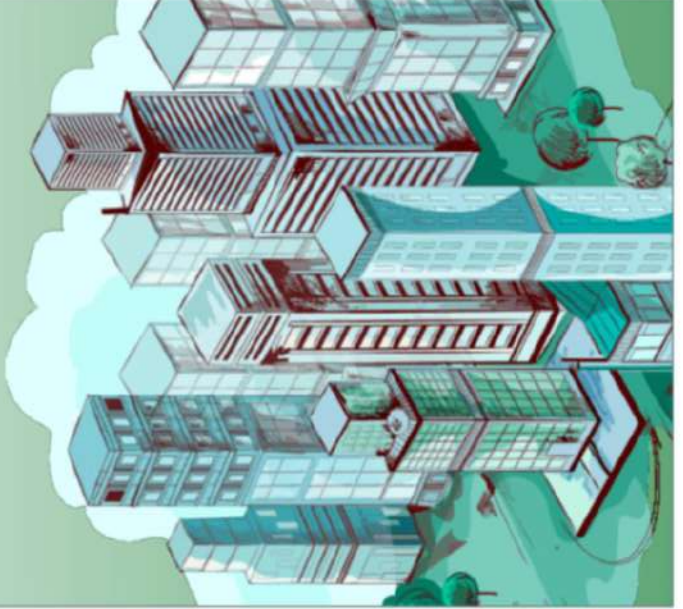
<http://isosud.faltl.trisakti.ac.id>

Wednesday, August, 5th 2020

Dr. Ir. Diana Hendrawan, M.Si
Chair Person



Dr. Melati Ferianita Fachrul, MS
Dean



Supported by
BAKERMA TL



Global Water
Partnership
Indonesian Asean